

2011 UPDATED CATALOG

CALL: 1-800-532-1932

COMING SOON !!!- TRY OUR
WEBSITE AT: allfordparts.com
E-mail: allford@jps.net

1909



1948

POLICIES

TOLL FREE ORDER NUMBER: 1-800-532-1932

- RETURNS** All items returned must be accompanied with a copy of the invoice. No returns on electrical items. Returns will not be accepted if the item has been altered, painted, primered or modified. No returns on special order or custom items. Returns after 30 days are subject to a 20% RESTOCKING FEE. No returns will be accepted after 6 months. Returns must be shipped pre-paid at owners expense. NO C.O.D.'s are accepted.
- CORES** Rebuilt or refurbished items will require a core or be charged a core charge prior to shipping. Core charges will be refunded when a rebuildable core is returned with a copy of the invoice. The core returned must be able to be rebuilt in order to receive a full refund. Cores that are damaged or rusted beyond repair will not be given a refund. All core returns must be shipped pre-paid at owners expense. No C.O.D.'s are accepted.
- DAMAGES - SHORTAGES** All claims for damages or shortages must be made within 48 hours of receiving your package. Claims on freight shipments must be made at time of receipt to the courier of the freight company before he leaves your business/residence. Please keep all packaing & cartons until claim has been completed. Please make driver note in system any visable damage of packaging to the driver at time of delivery.
- FOREIGN ORDERS** Payable in U.S. FUNDS only; by money order, bank check, or VISA/ DISCOVER/MASTERCARD (BEST & FASTEST). Please add 25% for shipping. There will be no backorders on foreign orders - please reorder.
- PRICE CHANGES** Due to unforeseen price increases from our suppliers, prices are subject to change without notice. Additional charges will be charged to your credit card or sent C.O.D.
- ORDERING** Phone, mail, fax or e-mail orders accepted. Please have all information available at time of order to help speed your order along. We accept VISA, MASTERCARD or DISCOVER, money orders and personal checks (may delay order). We also ship C.O.D. (Additional \$10 shipping). All items are shipped via Fed-Ex or USPS. Unless specified, all items that are temporarily out-of-stock will be backordered. Most backorders will be shipped within 1-3 weeks.
- SALES TAX** CALIFORNIA residents: Include sales tax rate of 7.5% for orders shipped. 8.5% over the counter.
- SHIPPING** Orders are primarily shipped by Fed-Ex or USPS. Items exceeding Fed-Ex weight or size limit will be shipped by truck freight or by Greyhound bus. (\$15 additional charge for orders shipped greyhound or freight requiring delivery to a depot or airport). Add \$10 for C.O.D. orders. Please specify if you would like a particular shipping method or delivery date/time. Shipping company is decided based on price, time-in-transit, & convience. Fed-Ex has a number of additional charges such as residential delivery, Rural delivery, and unusual & oversize pacakge. This will affect the final total of your shipping amount.

NEXT-DAY AIR, 2ND DAY AIR, 3RD DAY AVAILABLE AT ADDITIONAL COST

Shipping Price Estimates:

	Mail	Priority Mail			FedEx		
	Small under 1 lb	Flat Rate			Ground		
		Small	Medium	Large	Business	Resident	Rural-Residnt
Minimum:	\$2.75	\$6.00	\$11.50	\$15.20	\$6.64	\$9.83	\$12.73
Average:	\$3.50	\$6.00	\$11.50	\$15.20	\$9.60	\$12.02	\$15.55
	Small items only, no tracking	Parts must fit in flat rate size box. Insurance for \$50-\$250 add \$1. 2-3 est. delivery time.			Rural is for businesses/homes not in or near a major city. Average prices are estimates only. Large/Irregular shape items add \$8 and up.		

Insurance Rates:	\$100-\$500	\$1.00	\$500+	\$2.50 & up
-------------------------	-------------	--------	--------	-------------

International: International shipments primarily ship out USPS Priority Mail, we try to get you the cheapest rate possible. Please call or email you order and we can give you a rate quote for shipping.

*Average is an estimate of our average order with no dimension exceeding 24" and under \$500.00. Larger orders are harder to estimate shipping amount. Running boards, bumpers, fenders, and other large items please call for shipping quotes.



INDEX

FOR THIS CATALOG WE HAVE, FOR THE MOST PART, USED FORD'S ORIGINAL NUMBERING SYSTEM. BELOW WE HAVE LISTED THE GROUP, GROUP NUMBERS AND THE PAGES EACH GROUP OCCUPIES IN OUR CATALOG. A MORE SPECIFIC INDEX IS INCLUDED ON THE FOLLOWING PAGES FOR YOUR CONVENIENCE. IF YOU CAN'T FIND WHAT YOU NEED PLEASE INQUIRE!

WHEELS, HUBS & TIRES 1000-1723 6 to 10	RADIATOR 8000-8499 43 to 51	LAMPS 13002-13799 74 to 83
BRAKES 2004-2666 11 to 15	WATER PUMP 8500-8599 49	HORN 13800-13899 85 & 86
FRONT AXLE 3010-3446 16 & 17	FAN 8600-8693 49 to 52	WIRING 14054-14621 66 TO 69, 87 & 88
STEERING GEAR 3503-3743 18 to 20	FUEL TANK 9001-9326 53 to 55	ACCESSORIES 15001-15709 89 to 91
REAR AXLE 4000-4906 21 to 23	FUEL PUMP 9270-9420 55 & 56	FENDERS 16000-16449 92 to 94
FRAME & BRACKETS 5000-5149 25 & 26	MANIFOLDS, CLAMPS, ETC. 9421-9499 56	RUNNING BOARD 16450-16599 95 to 97
BATTERY BRACKETS & PARTS 5150-5199 26 & 27	CARBUREATOR 9502-9685 56 & 57	HOOD 16600-16799 98 to 107
MUFFLER & EXHAUST PIPE 5230-5293 27 & 28	THROTTLE CONTROL 9700-9828 56 to 61	SPEEDOMETER 17250-17499 109 & 110
SPRINGS 5300-5818 28 & 29	GENERATOR & BATTERY 10000-10848 63-64	WINDSHIELD WIPER 17500-17674 110 to 113
ENGINE 6000-6928 31 to 36	INSTRUMENTS 10849-10899 54, 55, 64 & 109	MIRRORS 17679-17745 114 to 117
TRANSMISSION 7000-7449 37 to 40	STARTER MOTOR 11000-11516 65	BUMPERS 17750-17999 118 to 120
CLUTCH 7500-7646 40 & 41	LIGHT SWITCH 11648-11688 66	SHOCK ABSORBER 18000-18199 121
	IGNITION 12000-12425 70 to 72	ACCESSORIES 18400-18600 121 to 128
<hr/>		
FASTENERS 129 to 135	GLOVE BOX 154	TRANSMISSION COVERS 178
FLOOR SEALS 137, 138 & 172	WINDOW CHANNEL 155 to 158	FLOOR MATS 179
COWL VENT 138	DOOR SCUFF PLATES 159	FIREWALL INSULATION 181
BODY PATCH PANELS 139 & 140	SUN VISORS 160	WINDOW SEALS 152, 153 & 182 to 184
DOOR HARDWARE 140 & 141	WINDOW REGULATORS 161	TRUNK 185 & 186
WINDSHIELD FRAMES 142 to 144	DOOR PULLS & LOCKS 141, 162	HANDLES & CRANKS 83, 84, 187 to 193
SHEET METAL 145 to 148, 227 to 228	DOOR SEALS 163 & 164	ESCUTCHEONS 191
RUMBLE SEAT 149 & 150	SEAT SPRINGS 165 to 168	FIBERGLASS 194 to 204
TOP IRONS 151	STRIKER PLATES 140, 150 & 169	DECALS 136
CONVERTIBLE 152 to 154	WOOD 170 to 172	BOOKS 219 to 226
	PICKUP 173 TO 177, 180	STREET ROD 205 to 264

INDEX

A

A-ARMS 247-249
 ACCELERATOR PEDAL 57
 ACCESSORIES (STREET ROD) 89-91, 121-124, 262,263
 ADAPTERS (ENGINE TO TRANSMISSION) 42
 AIR CLEANER 56, 211
 ANTENNAS 126
 ANTI-SQUEAK PAD 120
 ANTI-ROLL BAR 246,256
 APRONS 93
 ARM RESTS 169, 205
 ASH TRAY KNOBS 61
 ASH TRAYS 61
 AXLE ASSEMBLIES (STREET ROD) 245
 AXLE BOLTS 16
 AXLE BUMPERS (FRONT) 16
 AXLE BUMPERS (REAR) 29
 AXLE - DROPPED 245, 250

B

BACK WINDOW FRAME 151
 BACK WINDOW RUBBER 184
 BACKUP LAMP SWITCH 91
 BATTERY 64
 BATTERY BOX 26, 210, 262
 BATTERY CABLES 87
 BATTERY CABLE BRACKETS 87, 88
 BATTERY DEFLECTOR 26,178
 BATTERY DISCONNECT SWITCH 87
 BATTERY HOLD DOWN FRAME 26
 BATTERY HOLD DOWN PAD 26
 BEAUTY RINGS 7
 BED FLOORING (WOOD) 176
 BED FLOORS 174
 BED STRIPS 176
 BELTS 51
 BELT BUCKLES & CAPS 128
 "BLACK BOX" 207
 BLUE DOT LENS 81
 BODIES STEEL (FIBERGLASS) 146 (194)
 BODY EMBLEMS 94, 175, 178, 179, 213
 BODY INSULATION 181
 BODY-TO-FRAME GUSSET 178
 BODY MOULDING CLIPS 129
 BODY MOULDINGS 102, 107
 BODY NUMBER PLATES 124
 BODY PANELS 139, 140, 146-8
 BODY PATCH PANELS 139
 BODY-TO-FRAME PADS 25, 120
 BODY SOCKETS 134
 BOLT KITS 134, 135
 BOOKS 219 TO 226
 BRAKE PARTS 11 TO 15, 246-259
 BRAKE COMPONENTS (STREET ROD) 211, 246-259
 BRAKE & CLUTCH PEDAL BUMPERS 137
 BRAKE & CLUTCH PEDAL PADS 14, 262
 BRAKE DRUMS 8
 BRAKE FLUID 259
 BRAKE HANDLE 15, 259
 BRAKE HOSE 12, 259
 BRAKE LINES 13, 259
 BRAKE LINING 11
 BRAKE PEDAL ASSEMBLIES 211, 259
 BRAKE RODS 14
 BRAS 91
 BUG SCREENS 45
 BUMPER PARTS 119 TO 120
 BUMPER BOLTS 119
 BUMPER BRACKETS 118
 BUMPER BRACKET GROMMETS 120
 BUMPER GUARDS 119
 BUMPER TIPS 120
 BUMPER-TO-BODY SEAL 120
 BUMPERS 118
 BUMPERS (DOOR) 158

C

CAMSHAFT 33
 CAMSHAFT BEARINGS 34
 CAPS 124
 CARBURETOR 56, 57
 CAR COVERS 91
 CHASSIS - STREET ROD 234-243
 CHOKE RODS 56
 CHOKE ROD & CABLE KITS 62
 CHASSIS AND FRAMES 233-243
 CHASSIS COMPONENTS 246-262
 CHASSIS (PRO-COMP) 242, 243
 CIGAR LIGHTERS 90, 108
 CIRCUIT BREAKER 71
 CLOCK ASSEMBLY 89
 CLEVICE 264
 CLOCK BEZEL 60
 CLOCK FACE 89
 CLOCK KNOB 89
 CLOCK LIGHT WIRE 66, 89
 CLOCK MIRRORS 115

CLOCK PANELS 60
 CLUTCH PARTS 40, 41
 COLUMBIA REPAIR KIT 22
 COLUMBIA DECAL 225
 COLUMBIA KNOBS 153
 COLUMBIA INSTRUCTIONS 225
 COIL 70
 COIL-OVERS 247, 248, 251, 255
 CONDENSERS 71
 CONDENSER BOOT 71
 CONNECTING RODS 33
 CONVERTIBLE DOOR BUMPER KIT 158
 CONVERTIBLE HEADER BRACKET 151
 CONVERTIBLE RUBBER 152, 153
 CONVERTIBLE TOP IRONS 151, 204
 CONVERTIBLE TOP PARTS 151 TO 154, 204
 CONVERTIBLE WINDOW CHANNEL 152
 COMPRESSOR, AIR CONDITIONING 207
 COOLING SYSTEM 43 TO 52
 COOLING SYSTEM (STREET ROD) 260
 COWL-TO-FENDER SEAL 93
 COWL-TO-FIREWALL SEAL 138
 COWL LACING 104
 COWL LAMPS 77, 78
 COWL LAMP LENS 78
 COWL LAMP PADS 78
 COWL MIRRORS 116
 COWL MOULDINGS 107
 COWL PATCH PANELS 139
 COWL TRIM 107
 COWL VENT GASKET 138
 COWL VENT HANDLE 138
 COWL VENT HINGE 138
 COWL VENT KNOBS 59
 COWL VENT LID 138, 201
 COWL VENT PARTS 138, 139, 201
 COWL VENT RATCHET 138
 COWL VENT SCREEN 138
 CRANK HOLE COVER 47
 CRANKING TOOL 109
 CRANKSHAFT GEAR 34
 CROSSMEMBERS (STREET ROD) 212, 246, 248, 255, 261
 CROSSOVER PIPE 27
 CURTAIN ROD SOCKET 134
 CUT-OUT SWITCH 63
 CYLINDER HEAD 31, 42
 CYLINDER HEAD HARDWARE 31, 32
 CYLINDER SLEEVE 31

D

DASH GROMMETS 57
 DASH INSULATORS 181
 DASH KNOBS 58, 59, 61, 108, 123
 DASH PANELS 60-62, 108
 DASH PLASTIC 60, 61
 DASH SWITCH (DIMMER) 84
 DASH TRIM 60
 DATA PATENT PLATES 124
 DECALS 136, 225
 DECK EMBLEM 83
 DECK PANEL 95, 147, 148, 203
 DECK LID BUMPER 185
 DECK LID HANDLE 83, 84
 DECK LID HANDLE BASE 84
 DECK LID HANDLE PAD 84
 DECK LID HINGE 186
 DECK LID LATCH 84
 DECK LID LIGHT SOCKET 83
 DECK LID SEAL 185
 DECK LID STRIKER PLATE 169
 DECK LID SUPPORT 186
 DEFROSTER HOSE 122
 DEFROSTER KNOB 123
 DEFROSTER NOZZLE 122
 DIAL FACE GLASS (RADIO) 125
 DIAL FACE (RADIO) 125
 DIFFERENTIAL 21 TO 23, 263
 DIFFERENTIAL COVER PLATE 178
 DIMMER SWITCH 80
 DIP STICK 36, 214, 215, 263
 DIP STICK TUBE BOSS 31
 DISC BRAKE 246, 247, 257, 258
 DISTRIBUTOR BOOT 70
 DISTRIBUTOR CAP 70
 DISTRIBUTOR GASKET 70
 DISTRIBUTOR PARTS 70, 71
 DISTRIBUTOR PLUG 107
 DIVISION BAR (WINDSHIELD) 71
 DOME LAMP 85
 DOME LAMP LENS 85
 DOME LAMP SWITCH PLATE 85
 DOOR ARM RESTS 169
 DOOR ASSIST STRAPS 162
 DOOR BUMPERS 158
 DOOR CHECK ARM KITS 162
 DOOR CHECK ARM STRAPS 162

DOOR DOVETAIL 140
 DOOR EDGE MIRRORS 116
 DOOR ESCUTCHEON PADS 189-191
 DOOR GLASS SEAL 155, 156, 168
 DOOR HANDLES (INSIDE) 187 TO 189, 205
 DOOR HANDLES (OUTSIDE) 192, 193
 DOOR HANDLE PADS 193
 DOOR HANDLE PINS 189
 DOOR HANDLE SETS 187 TO 189
 DOOR HINGE PINS 131, 158
 DOOR HINGES 141
 DOOR HINGE (GLOVE BOX) 154
 DOOR HINGE MIRROR 116, 117
 DOOR JAM SEALS 163, 164
 DOOR LATCHES 141
 DOOR LATCH PULL 141, 162
 DOOR LOCK ESCUTCHEON 190
 DOOR LOCK (OUTSIDE) 162
 DOOR MOULDINGS 107
 DOOR PANELS 180
 DOOR PANEL CLIPS 129
 DOOR PANEL SPRING 190
 DOOR PARTS 140, 141
 DOOR PATCH PANELS 139, 140, 147, 148
 DOOR PULLS 162
 DOOR REGULATOR 161
 DOOR SCUFF PLATES 159
 DOOR SEALS & RETAINER CHANNELS 163, 164
 DOOR SEAL (BACK EDGE) 164
 DOOR SEAL (HINGE) 163
 DOOR SEAL (LOWER) 163
 DOOR SEAL (UPPER) 163
 DOOR SPRING 131, 141, 190
 DOOR STRAP BRACKET 162
 DOOR STRIKER PAD 140
 DOOR STRIKER PLATES 140
 DOOR TRIM 107
 DOOR WINDOW CHANNEL KITS 155 TO 158
 DOOR WINDOW FRAME SEAL 152
 DOOR WINDOW RETAINER 155 TO 157
 DOOR WINDOW TRIM PANEL 180
 DOVETAILS 140
 DRAG LINK 17, 252
 DRAG LINK SEAL 17
 DRIVESHAFT PARTS 23
 DRIVESHAFT YOKE 23
 DROPPED AXLE 245, 250
 DUSTER 109

E

EDGE SEAL (DOOR) 164
 ELECTRICAL COMPONENTS (STREET ROD) 205, 206, 262
 ELECTRIC WIPER MOTORS 110, 111
 EMBLEM (FENDER) 94
 EMBLEM (GRILLE) 45, 48, 49
 EMBLEM (HOOD) 48, 98, 99
 EMBLEM (TRUNK) 83
 EMERGENCY BRAKE CABLES 14, 15
 EMERGENCY BRAKE HANDLES 15
 EMERGENCY CABLE BOOT 14
 EMERGENCY CABLE BRACKET 13
 EMERGENCY CABLE GROMMET 12, 13, 57
 EMERGENCY CABLE GUIDE 13
 ENGINE ADAPTERS 42
 ENGINE SPECIFICATION BOOKS 220 TO 226
 ENGINE CROSSMEMBERS (STREET ROD) 212, 246, 248
 ENGINE MOUNTS (STREET ROD) 212, 261
 ENGINE OIL COOLER 260
 ENGINE PARTS 31 TO 36
 ENGINE SPLASH PANS 36
 ENGINE WIRING 67
 ESCUTCHEON (DOOR HANDLE) 190, 191
 ESCUTCHEON (DOOR LOCK) 190
 ESCUTCHEON (VENT WINDOW) 190
 ESCUTCHEON (WINDOW CRANK) 191
 EXHAUST DEFLECTORS 122
 EXHAUST MANIFOLDS 56
 EXHAUST PIPES 27, 28
 EXHAUST SYSTEM 27, 28
 EXHAUST SYSTEM (STREET ROD) 263

F

FAN ASSEMBLY 51, 62, 260
 FAN BELTS 51
 FAN SHROUD (STREET ROD) 43
 FEMALE DOVETAILS 140
 FENDER APRON 93, 94, 195, 199
 FENDER APRON BOLTS 93, 129
 FENDER APRON BUMPER 94
 FENDER BOLT KIT 92, 134
 FENDER BOOTS (REAR) 94
 FENDER BRACES 92, 94
 FENDER BRACE PANEL 93, 94
 FENDER CLAMP 93
 FENDER-TO-COWL SEAL 93
 FENDER EMBLEM 94
 FENDER GROMMET 120
 FENDER GUARD 94
 FENDER MOULDINGS 92



FENDER PANELS (INNER) 94
 FENDERS 94, 195 to 199
 FENDER PATCH PANELS 95
 FENDER SKIRTS (FIBERGLASS) 200
 FENDER SKIRT SEALS 122
 FENDER TRIM 92
 FENDER WELTING 93
 FENDER WELT (STAINLESS) 93
 FIBERGLASS BODIES 194
 FIBERGLASS DASH INSULATORS 181
 FIBERGLASS GRILLES 201
 FIBERGLASS FENDERS 195 to 199
 FIBERGLASS PARTS 145, 194 to 204
 FINGER PULL (WINDSHIELD) 144
 FIREWALL COVER CLIP 181
 FIREWALL GROMMET 57
 FIREWALL INSULATION 181
 FIREWALL SEAL 138, 210
 FIREWALL (STEEL) 210
 FLATHEAD SPEED EQUIPMENT 42
 FLOORBOARD SEALS 137, 138
 FLOORBOARDS 172, 210
 FLOOR COVER (BATTERY) 172, 178
 FLOOR COVER (TRANSMISSION) 178
 FLOOR MATS 179
 FLOOR MAT CLIP 129, 179
 FLOOR PAN 147, 227-229
 FLOOR PLUG 138
 FLOOR SEAL (STEERING TUBE) 137
 FLOOR SEAL (TRANSMISSION) 137
 FLOOR SHIFTER (STREET ROD) 283
 FLYWHEEL RING GEAR 35
 FOG LAMPS 91
 FOOT REST 57
 FORD PORCELAIN EMBLEM 48
 FORD PARTS TAGS 124
 FORD SCRIPT (HOOD) 98, 99
 FORD SIGN 124
 FRAME - STREET ROD 233, 242, 243
 FRAME BOXING PLATE 264
 FRAME HORN 26
 FRAME HORN COVERS 95, 200
 FRAME PAD 25
 FRAME PARTS 25, 26
 FRAME WEBBING 25
 FRAME (WINDSHIELD) 142
 FRAME WIRE CLIP 69
 FRONT AXLE 16, 17
 FRONT SUSPENSION (STREET ROD) 245-251
 FRONT FENDERS (FIBERGLASS) 195 to 199
 FUEL GAUGE 54
 FUEL GAUGE LIQUID 54, 64
 FUEL LINE 55
 FUEL PUMP 55
 FUEL SYSTEMS 53 to 56
 FUEL TANK 53, 216
 FUEL TANK-TO-SENDING UNIT ADAPTERS 211

G

GARNISH MOULDING 143, 145, 203
 GARNISH MOULDING INSERTS 145
 GAS APRON CHANNEL SEAL KIT 95
 GAS CAPS 53, 211
 GAS GAUGE COVER 53
 GAS LID BUMPER 53, 103
 GAS NECK CLAMP 53
 GAS NECK GROMMET 54
 GAS NECK HOSE 53
 GAS PEDAL 57
 GAS PEDAL ROD 57
 GAS SENDER GASKET 54
 GAS SENDER FLOAT 54
 GAS TANK 53, 216
 GAS TANK BOLT 53
 GAS TANK COVER 96
 GAS TANK COVER (FIBERGLASS) 200
 GAS TANK COVER SCREW 132
 GAS TANK PAD 55
 GAS TANK PARTS 53 to 55
 GAS TANK SEALER 53, 216
 GAS TANK SENDING UNIT 54, 211
 GASKET, COWL VENT 138
 GASKET, DECK LID 94
 GASKET, DISTRIBUTOR 70
 GASKET, HEADLIGHT 75, 76
 GASKET, HOOD ORNAMENT 50, 103
 GASKET, INSTRUMENT PANEL 54
 GASKET, LICENSE BRACKET 80
 GASKET, LICENSE LIGHT 80
 GASKET, PARKING LIGHT 77
 GASKET, STEERING BOX 18
 GASKET, TAIL LIGHT 81
 GAUGE FACES 54, 55, 109
 GAUGE, TEMPERATURE 84
 GAUGES (STREET ROD) 262
 GEAR OIL 218
 GEAR SHIFT BOOT 40, 137

GEAR SHIFT GROMMET 39, 40
 GEAR SHIFT INDICATOR 207
 GEAR SHIFT KNOBS 39, 59
 GEAR SHIFT REPAIR KIT 40
 GENERATOR BELTS 51
 GENERATOR PARTS 63, 206
 GLASS BUMPER 158
 GLASS PATTERNS 142
 GLASS SETTING TAPE 143
 GLOVE BOX 154
 GLOVE BOX DOOR 108, 202
 GLOVE BOX DOOR BUMPER 154
 GLOVE BOX DOOR HINGE 154
 GLOVE BOX DOOR REPAIR KIT 154
 GLOVE BOX DOOR SPRING 154
 GLOVE BOX DOOR STOP 154
 GLOVE BOX LOCK 154
 GLUE, RUNNING BOARD COVER 95, 218
 GLUE, WEATHERSTRIP 185, 218
 GRAVEL DEFLECTOR 119, 120, 204
 GREASE FITTINGS 15, 51, 133
 GREYHOUND RADIATOR ORNAMENTS 49
 GRILLE BARS 44, 45, 47
 GRILLE BUMPERS 120
 GRILLE CENTER 44, 45, 50
 GRILLE CLIPS 44, 80, 129
 GRILLE COMPONENTS 44 to 50, 209
 GRILLE, DELUXE 46
 GRILLE EMBLEM 45, 48, 49, 76
 GRILLE GUARDS 120
 GRILLE GUARD STIFFENER 120
 GRILLE HARDWARE KIT 130
 GRILLE INSERTS 46, 47, 209
 GRILLE MOULDING CLIPS 50, 106, 129
 GRILLE MOULDINGS 50, 106
 GRILLE ORNAMENTS 45, 48
 GRILLE PAD 120
 GRILLE PAN 45, 47, 52
 GRILLE PAN BUMPER 120
 GRILLE PARTS 44 TO 50, 209
 GRILLE SCREEN 45
 GRILLE SCRIPTS 213
 GRILLE SHELL 46, 201, 209
 GRILLE SHELL GROMMET 88
 GRILLE SHELL ORNAMENTS 48, 49
 GRILLE, STANDARD 48
 GRILLE SUPPORT 44, 47, 52
 GRILLE TRIM 44 to 50, 106
 GRILLE-TO-FENDER APRON 50
 GRILLE VENT PANELS 94
 GROMMETS 57
 GUARD, BUMPER 119
 GUARD, FENDER 94
 GUSSET PLATE 178

H

HALOGEN REFLECTOR KIT 75
 HANDLE, COWL VENT 138
 HANDLES (DECK LID) 83, 84
 HANDLES, DOOR 187 to 193
 HANDLE, DOOR OUTSIDE 192, 193
 HANDLE, PULL 162
 HANDLE, WINDSHIELD 183
 HEAD GASKETS 30
 HEADER BRACKET 151
 HEADER BUMPER 153
 HEADER SEAL 145, 153
 HEADER STRIP, METAL 144
 HEADLAMP 74
 HEADLAMP ADAPTER 74
 HEADLAMP BARS 76
 HEADLAMP BOLTS 76, 132
 HEADLAMP BUCKETS 73
 HEADLAMP CLIP 76
 HEADLAMP CONDUIT 88
 HEADLAMP CONDUIT REPAIR 88
 HEADLAMP GROMMET 88
 HEADLAMP LENS 76
 HEADLAMP PADS 76
 HEADLAMP PARTS 73 to 76
 HEADLAMP PLUG 88
 HEADLAMP, QUARTZ BULB 74
 HEADLAMP REFLECTOR 75
 HEADLAMP PIMS 75
 HEADLAMP RIM REPAIR KIT 72, 132
 HEADLAMP RIM SCREWS 75, 132
 HEADLAMP, SEALED BEAM 73, 74
 HEADLAMP SHELL GROMMET 88
 HEADLAMP SHELL REPAIR 72, 132
 HEADLAMP STAND 76
 HEADLAMP WIRE 66, 67
 HEADLAMP WIRE CROSSOVER CHANNEL 66
 HEADLINER 180
 HEATER 122, 123, 205
 HEATER HOSE 122
 HEATER HOSE BRACKET 91
 HEATER HOSE CLAMPS 122

HEATER HOSE CONNECTOR 91, 122
 HEATER KNOB 123
 HEATER PARTS 91, 122, 123
 HIGH BEAM JEWEL 84
 HINGE, DOOR SEAL 163
 HINGE PAD, HOOD 103
 HINGE PINS 131, 158
 HINGES (TRUNK LID) 186
 HOG RINGS 165
 HOOD ARM SPRING 103
 HOOD BOLTS 99
 HOOD BRACKETS 47, 102
 HOOD BUMPER KITS 105
 HOOD CENTER 102, 103
 HOOD CLIPS 103
 HOOD EMBLEMS 49, 98, 99
 HOOD HANDLES 49, 102, 103
 HOOD HANDLE & LATCH MOUNTING KIT 135
 HOOD HANDLE PIN 49
 HOOD HANDLE SPRING BRACKET 102
 HOOD HINGE BRACKETS 47, 209, 263
 HOOD HINGE 103, 209
 HOOD HINGE HARDWARE KIT 105
 HOOD HINGE PAD 103
 HOOD LACE 104
 HOOD LATCHES 103, 209, 263
 HOOD LATCH CLIP 103
 HOOD LATCH SPRINGS 103
 HOOD MOULDING CLIPS 129
 HOOD ORNAMENTS 48, 49, 98, 99, 103
 HOOD ORNAMENT BASE PADS 50, 103
 HOOD ORNAMENT MOUNTING KIT 49
 HOOD PARTS 98 to 106, 209
 HOOD PULL GROMMET 57
 HOOD RELEASE HANDLE 49
 HOOD RELEASE KIT 264
 HOOD SAFETY CATCH 106
 HOODS 99 to 101
 HOOD SIDE MOULDINGS 102, 103, 106
 HOOD STOP BRACKETS 106
 HOOD SUPPORT 102, 209
 HOOD SUPPORT ARM 103
 HOOD TRIM 50, 102, 103, 106
 HORN BOLT 86
 HORN BRACKETS 86
 HORN BUTTON 20
 HORN BUTTON CUSHION 20
 HORN BUTTON SPRING 19
 HORN BUTTON WIRE 20, 68
 HORN COVER 85, 86
 HORN GRILLE 86
 HORN GRILLE PAD 86
 HORN GROMMET 86
 HORN/LIGHT SWITCH ROD 20
 HORN MOTOR WIRING 67, 86
 HORN RODS 20
 HORN SCREEN 86
 HORN TAG 86
 HORN WIRE 20, 68, 86
 HORNS 20, 85, 86
 HOSE CLAMPS 51, 53
 HOSE, RADIATOR 51
 HUBCAPS 6, 7
 HUB PARTS 8 to 10
 HYDEM WELT 160
 HYDRAULIC BRAKE ADAPTER KIT 15

I

IGNITION CYLINDER 20
 IGNITION KEYS 20, 162
 IGNITION LOCK SHIM 20
 IGNITION POINTS 70
 IGNITION RESISTOR 71
 IGNITION SWITCH 20
 IGNITION SWITCH PLATES 66
 INDEPENDENT FRONT SUSPENSION 248-249
 INSERT, GARNISH MOULDING 145
 INSIDE REARVIEW MIRRORS 114, 115
 INSTRUMENT GAUGE GLASS 64
 INSTRUMENT PANEL 60, 108, 206
 INSTRUMENT PANEL DIMMER SWITCH 84
 INSTRUMENT PANEL FACE SETS 109
 INSULATION, BODY 181
 INSULATION, FIREWALL 181
 INTAKE MANIFOLD GASKET 35
 INTAKE MANIFOLD WASHER 133
 INTERIOR TRIM SCREW KITS 130

K

KICK PANELS 180
 KICK PANEL RETAINERS 180
 KICK PANEL TRIM 180
 KICKDOWN KITS 214, 215
 KNOB PINS 16, 250
 KNOB, ANTENNA 127

INDEX

KNOB, ASH TRAY 61
 KNOB, CIGAR LIGHTER 90
 KNOB, CONVERTIBLE TOP 153
 KNOB, COWL VENT 59
 KNOBS (DASH) 58, 59
 KNOB, DEFROSTER 123
 KNOB, GEAR SHIFT 39, 59
 KNOB, HEATER 123
 KNOB, RADIO 125
 KNOB, WINDOW CRANK 183, 190

L

LADDER BAR KITS 212
 LATCH, TRUNK 84
 LENS, BLUE DOT 81
 LENS, COWL LIGHT 78
 LENS, DECK BASE 81
 LENS, DOME LIGHT 85
 LENS, HEADLIGHT 76
 LENS, LICENSE PLATE LIGHT 80, 81
 LENS, PARKING LIGHT 77
 LENS, TAIL LIGHT 81
 LICENSE HOLDER (FRONT) 25, 82
 LICENSE LAMP 83
 LICENSE LENS CLIP 80
 LICENSE LIGHT 83, 263
 LICENSE PLATE BACK 213
 LICENSE PLATE BOLT 82
 LICENSE PLATE BRACKET 82
 LICENSE PLATE FRAMES 83, 263
 LICENSE PLATE LIGHT LENS 80, 81
 LICENSE PLATE PAD, GASKET 81, 84
 LIGHT BULB 74, 81, 211
 LIGHT, COWL 77, 78
 LIGHT, HEAD 74 to 76
 LIGHT, PARKING 77
 LIGHT SWITCH BODY 66
 LIGHT SWITCH/HORN ROD 20
 LIGHT, TAIL 78, 79, 208
 LIGHTERS 90, 91, 108
 LOCK CYLINDER, DOOR 162
 LOCK, GLOVE BOX 154
 LOCKING GAS CAP 53
 LOOM, WIRE CONDUIT 67, 69, 88, 213
 LOWER DOOR SEAL 163
 LUG WRENCH 109
 LUGGAGE RACKS 124
 LUGGAGE RACK EMBLEM 124

M

MAIN BEARINGS 34
 MALE DOVETAILS 140
 MANIFOLD (EXHAUST) 56
 MAP CASE 109
 MASTER CYLINDER 13, 269
 MASTER CYLINDER COVER PLATE 138
 MASTER CYLINDER MOUNT BRACKET 211
 MASTER CYLINDER REPAIR KIT 11
 METAL TOP MOULDING 160
 MIRRORS 114 to 117, 205
 MIRROR, BRACKET INTERIOR 115
 MIRROR, DOOR HINGE 116, 117
 MIRROR, EXTERIOR 116, 117, 205
 MIRROR, INTERIOR 114, 115, 205
 MIRROR HEAD, DOOR 116, 117
 MIRROR HEAD, INTERIOR 116
 MOTOR MOUNTS (FRONT) 31, 212, 261
 MOTOR MOUNTS (REAR) 32
 MOULDINGS (BODY) 107
 MOULDING CLIP KITS 129
 MOULDING (TOP) 160
 MUFFLER 27
 MUFFLER SUPPORT 28

O

OIL CHEX GAUGE 84
 OIL COOLER 260
 OIL FILLER CAPS 36
 OIL GAUGE 54, 64
 OIL PAN GASKET SET 36
 OIL PUMP 36
 OPERA SEAT BUMPER 165
 OUTSIDE REARVIEW MIRRORS 116, 117, 205
 OVERHAUL GASKET SETS 30

P

PACKAGE TRAY (WOOD) 171
 PAD, COWL LIGHT 78
 PAD, HORN GRILLE 86
 PAD, RUMBLE STEP 149
 PAINT, ENGINE 31, 218
 PAINT, STEERING WHEEL 19
 PANEL, DASH 60-62, 106, 205
 PANHARD BAR 249, 256
 PARALLEL LINK 249
 PARKING LAMPS 77
 PARKING LAMP BOOT 77

PARKING LAMP LENS 77
 PARKING LAMP LENS CLIP 77
 PARKING LAMP PAD 77
 PARKING LAMP WIRE 77
 PATCH PANELS 95, 139, 140, 147, 227-229
 PATENT DATA PLATES 124
 PEDAL BUMPERS 14, 137
 PEDAL COVER PLATES 178
 PEDAL PADS 14
 PEDAL SEALS 137
 PEEP MIRRORS 116, 117
 PICKUP BED PARTS 172 to 177
 PICKUP BEDS 173
 PICKUP BED SIDE PANELS 175
 PICKUP BED STRIPS 176
 PIN, DOOR HANDLE 189
 PISTON RINGS 32, 33
 PISTONS 32
 PITMAN ARM 18, 252
 PLUG, ANTENNA HOLE 127
 PLUG WIRES 71
 POLY-RIDE 251
 PORCELAIN GRILLE EMBLEM 48
 POWER ACCESSORY BLOCK 207
 POWER BRAKE 258
 POWER WINDOW KITS 213

Q

QUAIL RADIATOR ORNAMENT 49
 QUARTER GLASS RUBBER 184
 QUARTER MOULDINGS 107
 QUARTER PANEL BRACES 139
 QUARTER PATCH PANELS 139
 QUARTER TOP PADS 153
 QUARTZ BULB 74

R

RACK & PINION 252
 RADIATOR BOLT KIT 43, 52
 RADIATOR CAPS 43, 260
 RADIATOR CAP REPAIR KIT 43, 49
 RADIATOR FAN SHROUD 43
 RADIATOR/FENDER BRACKET 43, 94
 RADIATOR GRILLE PAN 50, 52, 98
 RADIATOR GRILLE SHIELD 52
 RADIATOR HOSE 51
 RADIATOR HOSE CLAMP 51
 RADIATOR HOSE, LOWER 51
 RADIATOR HOSE, UPPER 51
 RADIATOR OVERFLOW TANKS 260
 RADIATORS 43, 260
 RADIATOR SHELL LACING 104
 RADIATOR SHELL MOUNTING 135
 RADIATOR SHROUD SEAL 52
 RADIATOR SPLASH APRONS 98, 200
 RADIATOR SUPPORT RODS 44
 RADIATOR SUPPORT ROD BRACKET 44
 RADIO ANTENNAES 126, 127
 RADIO CHANGER BUTTON 125
 RADIO COVER 125, 209
 RADIO DIAL 125
 RADIO DIAL BEZEL 125
 RADIO DIAL FACE 125
 RADIO DIAL FACE GLASS 125
 RADIO INSTALLATION BOOK 126
 RADIO KNOB 108, 125
 RADIO MOUNTING HOOK 126
 RADIO PANEL 61, 108, 125
 RADIO PARTS 125 to 127
 RADIO NUT 126
 RADIO SPEAKER BOOT 126
 RADIO SPEAKER CLOTH 126
 RADIO SPEAKER GRILLE 61, 127
 RADIO STATION SELECTOR 125
 RADIUS ROD 244
 RADIUS ROD BUSHING 17
 REAR AXLE 22
 REAR AXLE ASSEMBLIES (STREET ROD) 253
 REAR END COVER 178
 REAR FENDERS (FIBERGLASS) 195 to 199
 REAR QUARTER WINDOW RUBBER 184
 REAR SUSPENSION (STREET ROD) 253-256
 REAR WINDOW BUMPER 151, 154
 REAR WINDOW DRAIN 148
 REAR WINDOW SEAL 184
 REAR WINDOW STRAP 151
 REFLECTOR, HEADLAMP 75
 REGULATOR HANDLE 189
 REGULATORS (WINDOW) 181
 REGULATOR, WINDSHIELD 182
 RESISTOR 71
 RESTORATION SUPPLIES 218
 RIM LINERS 10

RING & PINION GEARS 21
 RIVETS 129
 ROADSTER TOP IRONS 151, 204
 ROCKER PANELS 139
 ROD BEARINGS 33
 ROOF RIB WOOD KITS 171
 ROTOR (DISTRIBUTOR) 71
 RUBBER (WINDSHIELD) 182
 RUMBLE BUMPERS 149, 185
 RUMBLE HANDLES 83, 150
 RUMBLE HANDLE PAD 84
 RUMBLE HINGE KITS 149
 RUMBLE LATCH 84
 RUMBLE LID SEAL 185
 RUMBLE SEAT PARTS 149, 150
 RUMBLE SEAT RAIN GUTTERS 148
 RUMBLE STEP 149
 RUMBLE STEP BRACKET 149
 RUMBLE TRIP LEVER 150
 RUNNING BOARD 95 to 97
 RUNNING BOARD BOLT 95, 134
 RUNNING BOARD BRACES 97
 RUNNING BOARD COVERS 97
 RUNNING BOARD COVER GLUE 95, 218
 RUNNING BOARD PAD 25
 RUNNING BOARD MOULDINGS 97
 RUNNING BOARD TRIM CLIP KIT 97
 RUNNING BOARDS (FIBERGLASS) 200
 RUNNING BOARD STEP PLATES 95

S

SAFETY SWITCH (NEUTRAL) 207
 SAGINAW STEERING MOUNT 208
 SCREEN, COWL VENT 138
 SCREEN, HORN 86
 SCREW, COWL LIGHT 78, 132
 SCREW, DASH 136
 SCREW, DOOR HANDLE 130
 SCREW, DOOR HINGE 131
 SCREW, DOOR SCUFF 132
 SCREW, DOVETAIL 131
 SCREW, FLOORBOARD 133
 SCREW, FRONT FENDER 134
 SCREW, HEADLAMP RIM 75, 132
 SCREW, HOODLATCH 135
 SCREW KIT, INTERIOR 130
 SCREW, RADIATOR SHELL 135
 SCREW, REAR WINDOW 134
 SCREW, TAILLIGHT 131
 SCREW, WINDSHIELD FRAME 133
 SCUFF PLATES (DOOR) 159
 SEALED BEAM HEADLAMP 73, 74
 SEALED BEAM ADJUSTMENT KIT 73
 SEAT ADJUST HANDLE 161
 SEAT, BENCH (STREET ROD) 164
 SEATS (STREET ROD) 164
 SEAT FRAME SUPPORTS 186
 SEAT RELEASE PARTS 161
 SEAT SPRINGS 165 to 168
 SEAT SPRING LOCATING PIN 186
 SEAT WOOD 170
 SENDING UNIT (GAS) 54, 211
 SENDING UNIT, TEMPERATURE 64
 SHACKLE KITS 28, 251
 SHEETMETAL, BODY CHANNEL 147
 SHEETMETAL, DECK GUTTER 148
 SHEETMETAL, FLOOR 147, 227-229
 SHEETMETAL, FLOOR EXTENSION 147, 227
 SHEETMETAL, GRILLE 44, 45, 47, 50
 SHEETMETAL, PACKAGE TRAY 147
 SHEETMETAL, PATCH PANEL 139, 140, 147
 SHEETMETAL, RUMBLE RISER 147
 SHEETMETAL, SEAT ADJUSTER 147
 SHEETMETAL, SEAT FRAME 147
 SHEETMETAL, SEAT PANEL 148
 SHEETMETAL, SEAT RISER 147
 SHEETMETAL, UNDER DECK LID 146
 SHEETMETAL, UNDER SEAT 147, 227-229
 SHEETMETAL, WINDOW DRAIN 148
 SHIFT BOOT 40, 137
 SHIFT KNOB 39, 59
 SHIFT LEVER GROMMET 39, 40
 SHIFT LINKAGE REPAIR KIT 40
 SHIFTER (STREET ROD) 215, 263
 SHIMS (FRAME) 25
 SHOCK KIT 121, 209, 249
 SHOCK LINK BALL 121
 SHOCK MOUNT 121, 251
 SHOCK ABSORBER PARTS 121
 SIDE CURTIN ROD SOCKETS 134
 SIDEMOUNT MIRROR 114
 SILL PLATE, DOOR 159
 SIGRTS 200
 SOCKET, HIGH BEAM JEWEL 84
 SPARE TIRE COVER TRIM 10, 122
 SPARE TIRE COVER SEAL 10
 SPARE TIRE GROMMET 10
 SPARE TIRE HOLD-DOWN BRACKET 122
 SPARE TIRE PAD 10

SPARK PLUGS 72
 SPARK PLUG LOOM 72, 213
 SPARK PLUG WIRES 71
 SPARK PLUG WIRE BOOT 70
 SPEAKER CLOTH 126
 SPEAKER GRILLE 61, 127
 SPEED EQUIPMENT (FLATHEAD) 42
 SPEEDOMETER CABLES 110
 SPEEDOMETER CABLE BRACKET 110
 SPEEDOMETER CABLE GROMMET 57
 SPEEDOMETER FACES 109
 SPEEDOMETER FACE GLASS 64
 SPINDLE 246, 250
 SPINDLE BOLT KITS 16, 250
 SPOTLIGHTS 123
 SPREADER BARS 26, 263
 SPRING, BRAKE/CLUTCH 11, 14, 40, 41
 SPRING, CLAMP 28, 251
 SPRING COVERS 122
 SPRING, COWL VENT 138
 SPRING, DOOR 141
 SPRING, DOOR PANEL 190
 SPRING (FRONT) 28, 213, 251
 SPRING, GLOVE BOX DOOR 154
 SPRING, HOOD ARM & LATCH 103
 SPRING, HORN BUTTON 19
 SPRING, LINER 254
 SPRING, MOUNTING KIT 212, 254
 SPRING PARTS 28, 29, 251
 SPRING PERCH 16, 212, 251
 SPRING, PERCH NUT 18
 SPRINGS (SEAT) 165 to 168
 SPRING, SHACKLE 28, 254
 SPRING, "U" BOLT 29, 254
 STABILIZER BAR 29
 STABILIZER BUSHING 29
 STABILIZER SWIVEL 16
 STARTER BUTTON 59
 STARTER PARTS 65
 STEERING ARM 250
 STEERING BOX PARTS 17 to 19
 STEERING COMPONENTS (STREET ROD) 208, 250, 252
 STEERING COLUMN 214, 252
 STEERING COLUMN DROPS 215, 252
 STEERING FLOOR PLATES 137, 178, 215
 STEERING GEAR 252
 STEERING SECTOR 18
 STEERING SHAFT BUSHING 17
 STEERING TUBE FLOOR PLATE 137
 STEERING TUBE SEALS 137, 138
 STEERING U-JOINTS 208
 STEERING WHEELS 19, 232
 STEERING WHEEL PAINT 19, 218
 STEP, RUMBLE 149
 STONE DEFLECTOR (BUMPER) 120, 204
 STONE GUARD 94
 STOP LIGHT SWITCH 80
 STRIKER PLATE, DECK 150, 189
 STRIKER PLATE, DOOR 140
 STRIKER PLATE PAD 140
 SUICIDE DOOR SAFETY LOCK 141
 SUN VISORS 160
 SUN VISOR ROD 151, 160
 SUN VISOR BRACKET 151
 SUSPENSION COMPONENTS (STREET ROD) 245-256
 SWITCH, DASH LIGHT 84
 SWITCH LEVER, IGNITION 20
 SWITCH, NEUTRAL SAFETY 207
 SWITCH, UNIVERSAL 108
 SWITCH PLATE, IGNITION 66

T

T-SHIRTS 230, 231, INSIDE BACK COVER
 TAG, FORD SCRIPT 124
 TAIL GATES 174
 TAIL GATE BUMPER 164
 TAIL LAMP BRACE 80
 TAIL LAMP BRACKETS 79, 80
 TAIL LAMP CONDUIT REPAIR 88
 TAIL LAMP HALOGEN CONVERSION 208
 TAIL LAMP LENS 81
 TAIL LAMP PAD 82
 TAIL LAMP PARTS 78 to 82
 TAIL LAMP REFLECTOR 80
 TAIL LAMP RING 80
 TAIL LAMPS 78, 79, 213
 TAIL LAMP TRIM 79
 TAIL LAMP SCREWS 131
 TAIL LAMP SOCKET 69
 TAIL LAMP WIRING 69
 TAIL PIPE 27
 TANDEM WIPER 112
 TAPE, GLASS SETTING 143
 TEMPERATURE GAUGE 64
 TEMPERATURE GAUGE HOSE FITTING 122
 TEMPERATURE SENDER 64
 THERMOSTAT 51
 THERMOSTAT HOUSING 260
 THROTTLE ASSEMBLY 56, 57, 205, 214

THROTTLE CABLE (STREET ROD) 214
 THROTTLE CABLE KITS 62
 THROTTLE RODS 56
 TIE RODS 16, 252
 TIE ROD CLAMP 127
 TIE ROD ENDS 17, 252
 TIE ROD JAM NUT 263
 TIE ROD SEAL 17
 TIRE COVERS 10
 TIRES 10
 TIRE COVER TRIM 10
 TIRE TUBES 10
 TOOL BAG (OAK) 109
 TOP BOWS (OAK) 171
 TOP BOW PADS 152
 TOP BOW SEAL 145, 153
 TOP DECK MATERIAL 160
 TOP DECK RETAINER 160
 TOP HOLD-DOWN 151, 153, 154
 TOP IRONS 151, 204
 TOP IRON RIVET COVERS 151
 TOP KNOBS (CONVERTIBLE) 153
 TOP MATERIAL 160
 TOP MOULDINGS 160
 TOP REST BRACKET 153
 TOP REST SCREW 134
 TRAILING ARMS 255
 TRANSMISSION COVERS 178
 TRANSMISSION COVER FASTENER KIT 133
 TRANSMISSION MOUNT 32
 TRANSMISSION-TO-FLOOR SEAL 137
 TRANSMISSION PARTS 37 to 41
 TRANSMISSION SHIFTER 215, 263
 TRIM, BODY 102, 107
 TRIM CEMENT 158, 218
 TRIM CLIP KITS 129, 130
 TRIM, DASH 60
 TRIM, HOOD 102, 103, 106, 107
 TRIM, KICK PANEL 160
 TRIM RING (SPARE TIRE) 10
 TRIM, RUNNING BOARD 97
 TRIM SCREW KITS 129, 130
 TRUNK ARM SUPPORT 186
 TRUNK EMBLEM 83
 TRUNK GUSSETS 148
 TRUNK HANDLES 83, 84
 TRUNK HANDLE NUT 132
 TRUNK HANDLE PAD 84
 TRUNK HINGE 186
 TRUNK HINGE PADS 186
 TRUNK LATCH 84, 170
 TRUNK LID (FIBERGLASS) 203
 TRUNK LID BASE 84
 TRUNK LID BASE (INNER) 84
 TRUNK LID BUMPER 185
 TRUNK LID HINGES 186
 TRUNK LID LATCH 84, 170
 TRUNK LID SEAL 195
 TRUNK MAT 179
 TRUNK TOOL COVER (WOOD) 172
 TUBULAR STRUT ROD 248
 TURN SIGNAL KIT 78

U

U-BOLT 29, 251
 U-JOINTS 37, 208
 UPHOLSTERY BUTTONS 133
 UPHOLSTERY HOG RINGS 165
 UPPER DOOR SEAL 163

V

V-8 EMBLEM, HOOD 98
 V-8 EMBLEM, LUGGAGE RACK 124
 V-8 EMBLEM, SHELL 48, 76
 VACUUM WIPER MOTORS 110, 111
 VALVE PARTS 35
 VALVE GUIDE 35
 VENT GASKET, COWL 138
 VENT WINDOW EDGE SEAL 183, 184
 VENT WINDOW ESCUTCHEON 184, 190
 VENT WINDOW HANDLE 184, 189, 205
 VENT WINDOW REPAIR KIT 184
 VENT WINDOW RUBBER 183
 VENT WINDOW SEAL 183
 VOLTAGE CUT-OUT 63
 VOLTAGE REDUCER 63, 207
 VOLTAGE REGULATOR 63
 VOLTAGE REGULATOR PAD 63

W

WATER PUMPS 51
 WEATHERSTRIP ADHESIVE 158, 218
 WEBBING 26
 WELTING (FENDER) 93
 WHEEL BEARINGS 8 to 10

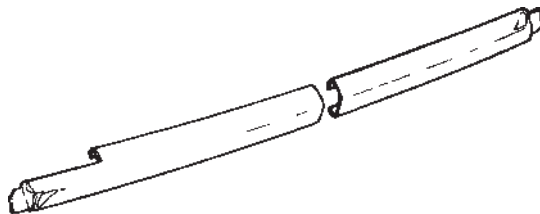
WHEEL CYLINDERS (FRONT) 12
 WHEEL CYLINDERS (REAR) 13
 WHEEL PARTS 8 to 10, 217
 WHEEL TRIM RINGS 7
 WHEEL WELLS 147, 210
 WINDLACE 162
 WINDOW CHANNEL (CONVERTIBLE) 152
 WINDOW CHANNEL (FELT) 155, 156
 WINDOW CHANNEL (METAL) 157, 159
 WINDOW CRANK 187-189, 205
 WINDOW CRANK KNOB 190
 WINDOW FELT KITS 155, 156
 WINDOW FRAME (BACK) 151, 213
 WINDOW FRAME SEAL 152
 WINDOW GLASS PATTERNS 142
 WINDOW REGULATORS 161
 WINDOW RETAINER (DOOR) 155 to 158
 WINDOW RUBBER (BACK) 184
 WINDOW RUBBER (VENT) 183, 184
 WINDOW SEAL (CONVERTIBLE) 152, 153
 WINDOW SEAL (QUARTER) 184
 WINDOW SEAL (REAR) 184
 WINDOW SHADE (BACK) 161
 WINDOW STOP 158
 WINDOW VENT, HANDLE 184, 189
 WINDSHIELD DIVISION BARS 107
 WINDSHIELD FRAME PARTS 142-144
 WINDSHIELD FRAMES 142, 213
 WINDSHIELD FRAME CLIP 143
 WINDSHIELD GARNISH MOULDING 144
 WINDSHIELD HANDLE 183
 WINDSHIELD HARDWARE 143, 144
 WINDSHIELD HINGE SEAL 182
 WINDSHIELD POST PAD 144
 WINDSHIELD REGULATOR HANDLES 183
 WINDSHIELD REGULATORS 182
 WINDSHIELD RUBBER 182
 WINDSHIELD SEAL 182
 WINDSHIELD SEALER 143
 WINDSHIELD STANCHION 143, 144
 WINDSHIELD STUD 134, 144
 WINDSHIELD SWING ARM 143
 WINDSHIELD WING NUT 144
 WINDSHIELD WIPER ARMS 112, 205
 WINDSHIELD WIPER MOTORS 110, 111
 WINDSHIELD WIPER PARTS 110 to 113
 WINDSHIELD WIPER TOWERS 113
 WINDING BRACKETS 121
 WINDING BRACKET PADS 121
 WINDING TENSION SPRING 134
 WING TIPS (BUMPER) 120
 WIPER ARMS & BLADES 112, 205
 WIPER ARM NUT 111
 WIPER MOTORS 110, 111
 WIPER SHAFT SEAL 112
 WIPER SWITCH 112
 WIPER TOWER 113
 WIPER TOWER PADS 112
 WIRE CLAMP 64
 WIRE CLIP 69
 WIRE CONNECTOR 69
 WIRE LOOM 69, 72, 213
 WIRE LOOM GROMMET 68
 WIRE PER FOOT 69
 WIRING BOARDS (STREET ROD) 262
 WIRING, CLOCK LIGHT 66
 WIRING, COIL 67
 WIRING, CONVERTIBLE TOP 66
 WIRING, COWL LIGHT 67
 WIRING, DASH 68, 206
 WIRING, DOME LIGHT 69
 WIRING, ENGINE 66, 67
 WIRING, HEADLAMP 67
 WIRING, HIGH BEAM JEWEL 84
 WIRING, HORN 86
 WIRING, HORN BUTTON 20
 WIRING, LICENSE LIGHT 69
 WIRING, OVERDRIVE 69
 WIRING, PARKING LIGHT 77
 WIRING, SPARK PLUG 71
 WIRING SYSTEM (STREET ROD) 206, 207
 WIRING, TAIL LIGHT 69
 WISHBONE SPLITTER 206
 WOOD, FLOOR BOARD 172
 WOOD, HEADER 170, 171
 WOOD, PACKAGE TRAY 171
 WOOD, ROOF RIB 171
 WOOD, SEAT FRAME 170
 WOOD, WINDOW FRAME 171
 WOOD, WINDSHIELD STRIP 171
 WORM GEAR (STEERING) 17

X

X-MEMBER SUPPORT 212

1939 STAINLESS STEEL BODY MOULDINGS


A FEW OF THESE ITEMS
ARE OVERLENGTH



COWL MOULDINGS

1939
91A-700328 PAIR 35.00

FRONT DOOR MOULDINGS

1939 TUDOR, R.H.
91A-7020934 EACH 35.00
1939 TUDOR, L.H.
91A-7020935 EACH 35.00

1939 FORDOR, COUPE &
SEDAN DELIVERY, R.H.
91A-7320934 EACH 30.00
1939 FORDOR, COUPE &
SEDAN DELIVERY, L.H.
91A-7320935 EACH 30.00

1939 CONVERTIBLE SEDAN, R.H.
91A-7420934 EACH 60.00
1939 CONVERTIBLE SEDAN, L.H.
91A-7420935 EACH 60.00

1939 CONVERTIBLE, R.H.
91A-7720934 EACH 35.00
1939 CONVERTIBLE, L.H.
91A-7720935 EACH 35.00

REAR DOOR MOULDING

1939 FORDOR, R.H.
91A-7325554 EACH 30.00
1939 FORDOR, L.H.
91A-7325555 EACH 30.00

1939 CONVERTIBLE SEDAN, R.H.
91A-7425554 EACH 60.00
1939 CONVERTIBLE SEDAN, L.H.
91A-7425555 EACH 60.00

REAR QUARTER MOULDING

1939 TUDOR, R.H.
91A-7029034 EACH 60.00
1939 TUDOR, L.H.
91A-7029035 EACH 60.00

1939 FORDOR, R.H.
91A-7329034 EACH 60.00
1939 FORDOR, L.H.
91A-7329035 EACH 60.00

REAR QUARTER MOULDING (CONT'D)

1939 CONVERTIBLE SEDAN, R.H.
91A-7429034 EACH 85.00
1939 CONVERTIBLE SEDAN, L.H.
91A-7429035 EACH 85.00

1939 CONVERTIBLE, R.H.
91A-7629034 EACH 60.00
1939 CONVERTIBLE, L.H.
91A-7629035 EACH 60.00

1939 COUPE, R.H.
91A-7729034 EACH 60.00
1939 COUPE, L.H.
91A-7729035 EACH 60.00

1939 SEDAN DELIVERY, R. OR L.
91A-7829034 EACH 70.00

CENTER HOOD MOULDING

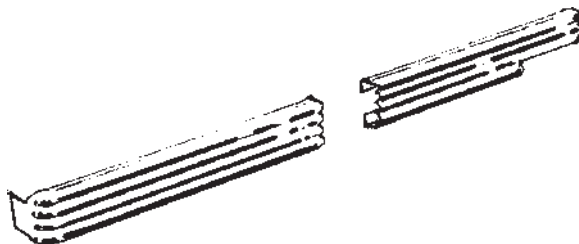
91A-16736 EACH 55.00

WIRE CLIPS FOR HOOD CENTER

91A-20003 8 PER KIT 5.50

1940 STAINLESS STEEL BODY MOULDINGS


A FEW OF THESE ITEMS
ARE OVERLENGTH



'47 & '48 STAINLESS
BODY MOULDINGS
COMING SOON!

COWL MOULDINGS

1940
01A-700328/9 PAIR 40.00

FRONT DOOR MOULDINGS

1940 CONVERTIBLE & TUDOR, R.H.
01A-7020934 EACH 40.00
1940 CONVERTIBLE & TUDOR, L.H.
01A-7020935 EACH 40.00

1940 COUPE & FORDOR, R.H.
01A-7320934 EACH 40.00
1940 COUPE & FORDOR, L.H.
01A-7320935 EACH 40.00

REAR DOOR MOULDINGS

1940 FORDOR, R.H.
01A-7325554 EACH 40.00
1940 FORDOR, L.H.
01A-7325555 EACH 40.00

REAR QUARTER MOULDINGS

1940 CONVERTIBLE, R.H.
01A-6629044 EACH 60.00
1940 CONVERTIBLE, L.H.
01A-6629045 EACH 60.00

1940 TUDOR, R.H.
01A-7029034 EACH 60.00
1940 TUDOR, L.H.
01A-7029035 EACH 60.00

1940 FORDOR, R.H.
01A-7329034 EACH 60.00
1940 FORDOR, L.H.
01A-7329035 EACH 60.00

1940 COUPE, R.H.
01A-7729034 EACH 60.00
1940 COUPE, L.H.
01A-7729035 EACH 60.00

1940 SEDAN DELIVERY, R. OR L.
01A-7829034 EACH 70.00

CENTER HOOD MOULDING

1940 STANDARD
01A-16736-A EACH 55.00
1940 DELUXE
01A-16736-B EACH 55.00
1940 PICKUP
01C-16736 EACH 55.00

WIRE CLIPS FOR HOOD CENTER

91A-20003 8 PER KIT 5.50

OUTER CENTER WINDSHIELD DIVISION

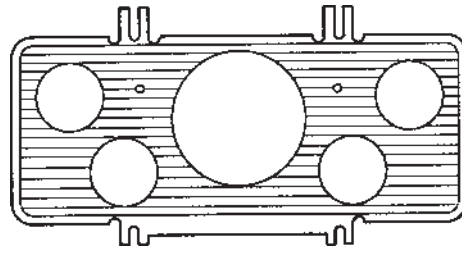
BAR - POLISHED STAINLESS
1940 CLOSED CAR
01A-7003078 EACH 50.00

1941-48 PASSENGER
11A-7003078-B EACH 50.00

INNER WINDSHIELD MOLDING

1940 PASSENGER
01A-7003079-B EACH 25.00

ALUMINUM DASH PANELS



1932 PASSENGER & PICKUP
3 1/8" SPEEDOMETER
B-9271-18 EACH 125.00

1932 PASSENGER & PICKUP
3 3/8" SPEEDOMETER
B-9271-38 EACH 125.00

1933-34 PASSENGER
3 1/8" SPEEDOMETER
40-9271-18 EACH 125.00

1933-34 PASSENGER
3 3/8" SPEEDOMETER
40-9271-38 EACH 125.00

1935-36 PASSENGER
3 1/8" SPEEDOMETER
48-9271-18 EACH 125.00

1935-36 PASSENGER
3 3/8" SPEEDOMETER
48-9271-38 EACH 125.00

1935-36 PICKUP
3 1/8" SPEEDOMETER
50-9271-18 EACH 125.00

1935-36 PICKUP
3 3/8" SPEEDOMETER
50-9271-38 EACH 125.00

1937 PASSENGER
3 1/8" SPEEDOMETER
78-9271-18 EACH 125.00

1937 PASSENGER
3 3/8" SPEEDOMETER
78-9271-38 EACH 125.00

1938-39 PASSENGER
3 1/8" SPEEDOMETER
81A-9271-18 EACH 125.00

1938-39 PASSENGER
3 3/8" SPEEDOMETER
81A-9271-38 EACH 125.00

1940 PASSENGER & PICKUP
SMOOTH SATIN FINISH WITH TURN
SIGNALS
01A-9271-SR1 EACH 125.00

1940 PASSENGER & PICKUP
SMOOTH SATIN FINISH, NO TURN
SIGNALS
01A-9271-SR2 EACH 125.00

1940 PASSENGER & PICKUP
STEPPED SATIN FINISH WITH TURN
SIGNALS
01A-9271-SR3 EACH 125.00

1940 PASSENGER & PICKUP
STEPPED SATIN FINISH, NO TURN
SIGNALS
01A-9271-SR4 EACH 125.00

1940 PICKUP, 3 1/8" SPEEDOMETER
01C-9271-18 EACH 125.00

1940 PICKUP, 3 3/8" SPEEDOMETER
01C-9271-38 EACH 125.00



GLOVE BOX DOOR
1933-34
DIE CAST ALUMINUM

WITHOUT CLOCK HOLE
40-9275 EACH 130.00

WITH CLOCK HOLE
40-9275-C EACH 130.00

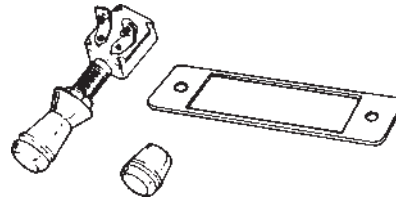


DASH CENTER
1933-34
DIE CAST ALUMINUM

WITHOUT TACH. HOLE
90-9274 EACH 75.00

WITH TACH. HOLE
90-9274-T EACH 75.00

1940 DASH GAUGE WIRE LOOM
FOR ABOVE DASH USING VDO GAUGES
01A-14401-SR ASSEMBLY 45.00

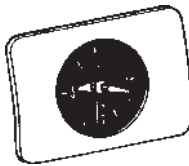


MACHINED ALUMINUM DASH GOODIES

UNIVERSAL PULL SWITCH
WITH MACHINED KNOB & TERMINALS
SR-11655 EACH 19.00

HEADLIGHT SWITCH, TWO STAGE
WITH MACHINED KNOB & TERMINALS
SR-11654 EACH 23.00

CIGAR LIGHTER WITH ELEMENT, SOCKET
AND MACHINED KNOB & TERMINALS
SR-15055 EACH 23.00



ALUMINUM CLOCK PANEL
1940
CLOCK SOLD SEPARATELY
SMOOTH BRUSHED FINISH
01A-9272-SR1 EACH 75.00

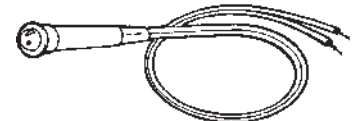
STEPPED STYLE
01A-9272-SR2 EACH 75.00

DASH KNOBS (SMALL)
FOR ASH TRAY, GLOVE BOX DOOR, ETC.
SR-9270-S EACH 5.50

DASH KNOBS (LARGE)
SAME AS ABOVE SWITCH KNOBS
SR-9270-L EACH 6.50

RADIO KNOB
FIT MOST MODERN STERIOS.
SR-18803 PAIR 14.00

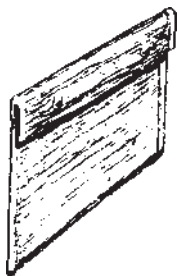
RADIO BEZEL FOR MOST CASSETTE
DECKS WITH ADJUSTABLE POST
SR-18802 EACH 75.00



TURN SIGNAL INDICATOR LIGHTS
FIT PRE-DRILLED HOLES IN DASH INSERT
GREEN
DL-16-G EACH 5.00

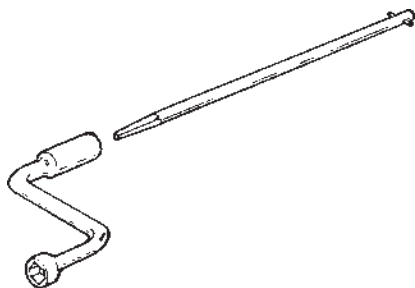
RED
DL-16-R EACH 5.00

GAUGE FACES



TOOL BAG
1932-48 PLAIN
B-17005-A EACH

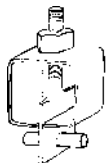
11.50



**WHEEL LUG WRENCH WITH
CRANKING TOOL**
1932-40 PASSENGER & COMMERCIAL

40-17036 SET

44.95



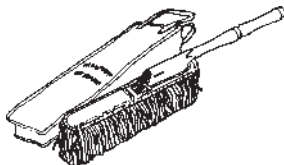
SHEET METAL CLAMP
USE THREE OR MORE OF THESE TO HOLD
SHEETMETAL EDGES TOGETHER WHILE
WELDING
X-41111 EACH

6.00



HINGE PIN PULLER
TL-100 EACH

25.00

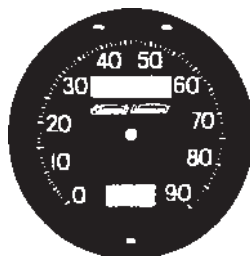


CAR DUSTER

THIS LARGE DUSTER FITTED WITH A
WOODEN HANDLE IS AS AESTHETIC AS
IT IS USEFUL. AVOID SCRATCHING YOUR
PAINT WHEN REMOVING DAILY DUST
DEPOSITS. COMES WITH CASE.

X-15900-A EACH

INQUIRE



SPEEDOMETER FACE

EXACT DUPLICATE OF ORIGINAL
STEWART-WARNER, 90 M.P.H.
1932 PASSENGER, 32-34 COMM.
B-17255-SWF EACH

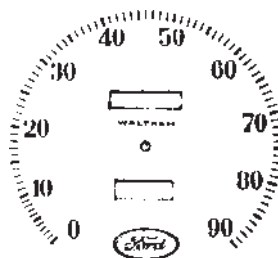
30.00

WALTHAM
1932 PASSENGER, 32-34 COMM.
B-17255-WF EACH

INQUIRE

DELCO REMY
1932 PASSENGER, 32-34 COMM.
B-17255-DF EACH

INQUIRE



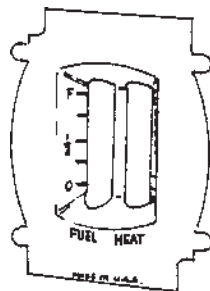
SPEEDOMETER FACE
METAL, AAA QUALITY

1933-34 PASSENGER
WALTHAM
40-17255-WF EACH

INQUIRE

1933-34 PASSENGER
STEWART-WARNER
40-17255-SWF EACH

INQUIRE



DUAL TEMP-GAS FACE PLATE

1932
B-9280-TGF EACH

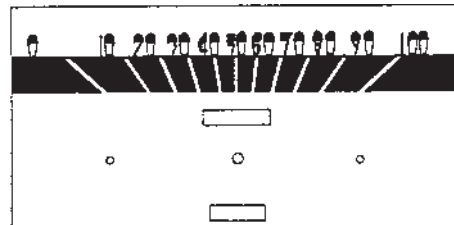
INQUIRE

1933-34
40-9280-TGF EACH

INQUIRE

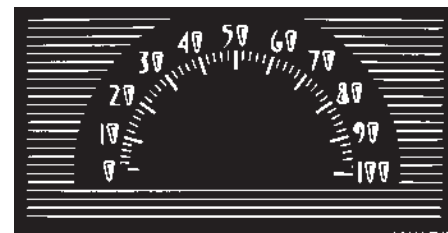
GAUGE FACE KITS

DIE STAMPED STEEL, NOT DECALS
SILK SCREENED TO MATCH ORIGINAL
INCLUDE SPEEDOMETER, BATTERY,
FUEL, TEMPERATURE AND OIL GAUGE
FACES.



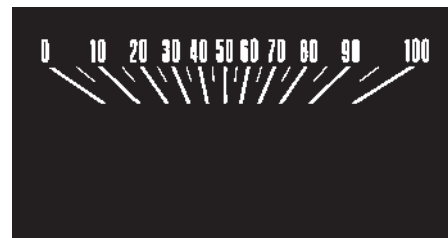
1940 DELUXE
01A-17255-B KIT

DISCONTINUED



1940 STANDARD
01A-17255-A KIT

INQUIRE



1940 DELUXE STREET ROD
01A-17255-BH KIT

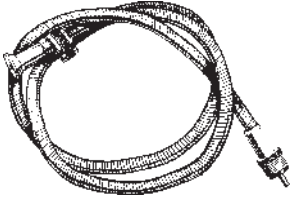
INQUIRE



1940 STANDARD STREET ROD
01A-17255-AH KIT

INQUIRE

SPEEDOMETER

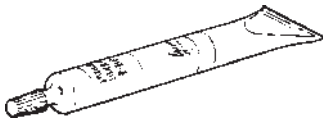


SPEEDOMETER CABLE - U.S.A.

1932-48 PASSENGER, 32-41 COMM.
B-17260-S EACH 25.00

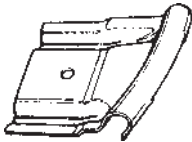
1942-47 1/2 TON COMM.,
40-47 TRUCK
01T-17260 EACH INQUIRE

OTHER CABLES AVAILABLE
PLEASE INQUIRE



SPEEDOMETER CABLE LUBE

A-17261-L EACH 2.50



SPEEDOMETER CABLE TO FRAME BRACKET

1939-40 PASSENGER, 39-41 PICKUP
99A-17263 EACH 10.00



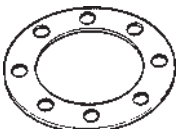
SPEEDOMETER GEAR CAP GASKET

1932-48
B-17275 EACH .50



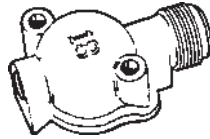
SPEEDOMETER GEAR SNAP RING

1932-48
B-17286 EACH 1.25



SPEEDOMETER GEAR THRUST WASHER

1932-48
B-17290 EACH 2.95



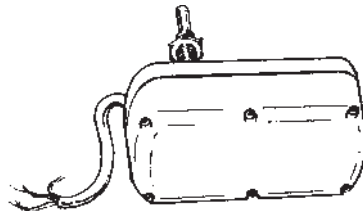
SPEEDOMETER GEAR ASSEMBLY

VARIOUS YEARS AND RATIOS AVAILABLE
NEW & USED
B-17270 EACH INQUIRE



USED SPEEDOMETER DRIVE GEARS

1932-48 PASSENGER, 32-41 COMM.
B-17285 EACH 25.00



MIGHTY-MITE WIPER

12 VOLT
OPEN & CLOSED CARS
FITS BEHIND HEADER PANEL ON
CLOSED CARS.

STANDARD SHAFT LENGTH 1 1/2"

STRAIGHT SHAFT
A-17509-MM EACH 155.00*

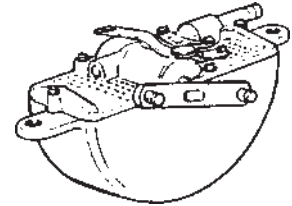
STANDARD SHAFT LENGTH 1 1/2"
TAPERED SHAFT
A-17509-MT EACH 155.00*

FINNED ALUMINUM COVER
A-17509-MMC EACH 60.00

*OPTIONAL SHAFT LENGTHS AVAILABLE
2" & 2 1/2". X 3" SPECIFY(EACH) ADD 10.00

WITH ARM & BLADE ADD 30.00

WINDSHIELD WIPER



WINDSHIELD WIPER MOTORS

THESE ARE GENUINE TRICO WIPER MOTORS. SOME ARE ORIGINAL AND OTHERS ARE TRICO REPLACEMENTS. A FEW HAVE BEEN REBUILT. N.O.S. & REBUILT REGULATORS AVAILABLE. PLEASE INQUIRE.

VACUUME MOTORS, CLOSED CARS

**PRICES NOT ACCURATE
PLEASE INQUIRE**

1933-34 PASSENGER*
40-17508 EACH 175.00

1935-36 PASSENGER*
48-17508 EACH 135.00

1937-38 PASSENGER*
78-17508 EACH 135.00

1939 PASSENGER*
91A-17508 EACH 135.00

1940 PASSENGER*
01A-17508 EACH 175.00

1940-47 PICKUP*
01C-17508 EACH 135.00

1941 PASSENGER*
11A-17508 EACH 135.00

1942-46 PASSENGER*
21A-17508 EACH 135.00

1947-48 PASSENGER*
6A-17508 EACH 135.00

*EXCHANGE: CORE CHARGE 25.00
LIMITED SUPPLY, PLEASE INQUIRE

**USE OUR 800 NUMBER OR
FAX NUMBER FOR
PLACING YOUR ORDER!**



WIPER CLIP & SPRING ASSEMBLY

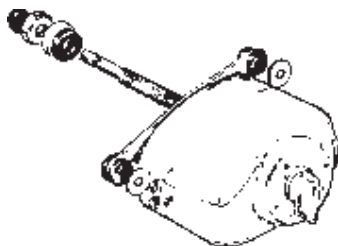
1937-40 PASSENGER
1937-39 OPEN CARS
78-17450 EACH 5.00

1941-48 PASSENGER
11A-17450 EACH 5.00



WIPER ARM NUTS

1937-40 PASSENGER, 37-47 PICKUP
78-17481 PAIR 15.00



ELECTRIC WIPER MOTORS

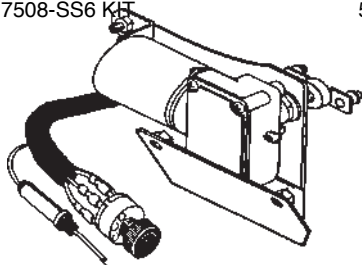
1932-37 UNIVERSAL REPLACEMENT

6 VOLT
A-17508-E6 EACH 55.00

12 VOLT
A-17508-E12 EACH 55.00

12 VOLT, POLISHED STAINLESS
WITH UNIVERSAL ARM & BLADE
A-17508-SS12 KIT 55.00

6 VOLT
A-17508-SS6 KIT 55.00



1940 PASSENGER

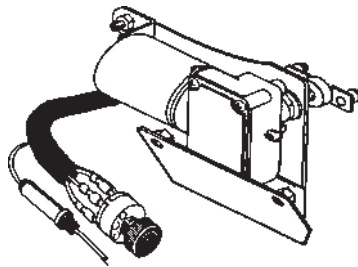
6 VOLT
01A-17508-HD6 EACH 200.00

12 VOLT
01A-17508-HD12 EACH 200.00

1941-42 PASSENGER

6 VOLT
11A-17508-HD6 EACH 200.00

12 VOLT
11A-17508-HD12 EACH 200.00



ELECTRIC WIPER MOTORS

1946-48 PASSENGER
6 VOLT
51A-17508-HD6 EACH 200.00

12 VOLT
51A-17508-HD12 EACH 200.00

**NOTE: WILL NOT WORK IN CARS
WITH ORIGINAL RADIOS.**



WIPER HOSE GROMMET

1932-37 ROADSTER & PHAETON
B-17511 EACH 15.00



WINDSHIELD WIPER BEZELS

1937-39 PASSENGER EXCEPT
WAGON & CONVERTIBLE
78-17515 EACH 8.00

1941-48 PASSENGER
11A-17515 PAIR (SMALL) 18.50
7C-17515-L PAIR (LARGE) 15.00



WINDSHIELD WIPER KNOBS

1932-36 ALL, 37 CLOSED CAR
CHROME, SCREW-ON
B-17513 EACH 5.00

1937 STANDARD, WAGON
LIGHT BROWN, PUSH-ON
78-17513-A EACH 6.50

1937 DELUXE, CONVERTIBLE &
WAGON
YELLOWISH-BROWN, PUSH-ON
78-17513-B EACH 6.50

1938 CLOSED CAR
IVORY, SCREW-ON
81A-17513-A EACH 6.50

1938 CONVERTIBLE & WAGON
IVORY, PUSH-ON
81A-17513-B EACH 6.50

1939 CLOSED CAR
LIGHT YELLOW, SCREW-ON
91A-17513-A EACH 6.50

1939 CONVERTIBLE & WAGON
LIGHT YELLOW, PUSH-ON
91A-17513-B EACH 6.50

1940 STANDARD CAR, 40-41 PICKUP
SAND, PUSH-ON
01A-17513-A 6.50

1940 DELUXE
MAROON, PUSH-ON
01A-17513-B EACH 6.50

1941
TAN, PUSH-ON
11A-17513 EACH 8.50

1942
MAROON, PUSH-ON
21A-17513-A EACH 8.50

1942
BUTTERSCOTCH, PUSH-ON
21A-17513-B EACH 8.50

1946
CHOCOLATE
51A-17513-A EACH 8.50

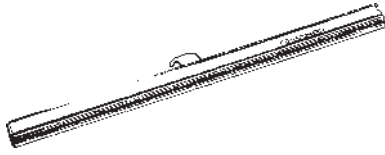
1946
BLUE-GRAY, PUSH-ON
51A-17513-B EACH 8.50

1946 SUPER DELUXE CONVERTIBLE,
WAGON, SPORTSMAN, 1947-48 ALL
GRAYISH-TAN, PUSH-ON
51A-17513-C EACH 8.50

1940 MERCURY
DARK BLUE, PUSH-ON
09A-17513 EACH 8.50

1942-47 PICKUP
BLACK, PUSH-ON
21C-17513 EACH 8.50

WINDSHIELD WIPER (CONT'D.)



WIPER BLADES

STAINLESS STEEL & SUPER QUALITY RUBBER. WRIST OR HOOK & SADDLE MOUNT

1932-40, 8 1/4" LONG, HOOK & SADDLE	
78-17528-B EACH	10.00
1932-40, 8 1/4" LONG, WRIST	
78-17528-W EACH	17.50
1941-48, 9" LONG, HOOK & SADDLE	
21A-17528 EACH	10.00
1941-48, 10" LONG, WRIST	
7C-17528-W EACH	17.50

WRIST TYPE

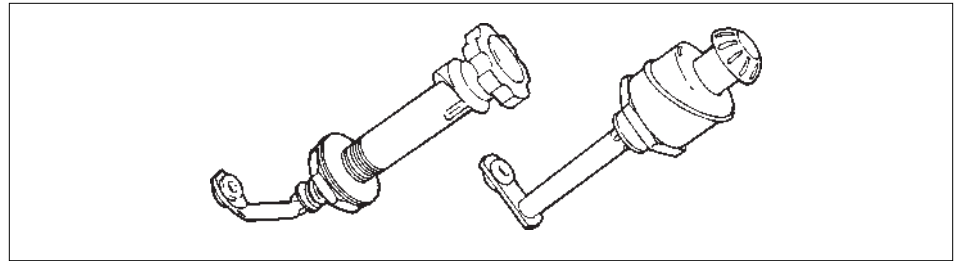


HOOK & SADDLE

WINDSHIELD WIPER ARMS - U.S.A.

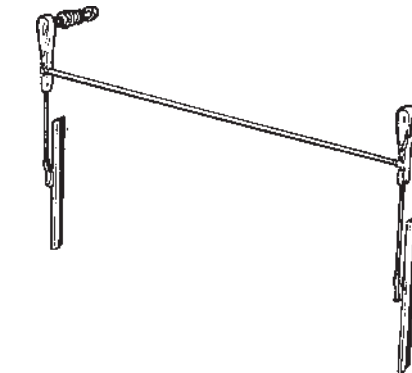
SUPER QUALITY & DETAIL AVAILABLE IN STD. HOOK & SADDLE OR NEW WRIST TYPE BLADE MOUNT

1932-36 ALL	
B-17529 EACH	25.00
1937-39 CLOSED CAR & PICKUP	
78-17529 EACH	25.00
78-17529-WT (WRIST MOUNT) EACH	25.00
1937-40 OPEN CARS & WAGON	
1940 CLOSED CAR	
01A-17526 EACH	25.00
01A-17529-WT (WRIST MOUNT) EACH	25.00
1941-48 ALL, RIGHT HAND	
11A-17526 EACH	25.00
11A-17526-WT (WRIST MOUNT) EACH	25.00
1941-48 ALL, LEFT HAND	
11A-17527 EACH	255.00
11A-17527-WT (WRIST MOUNT) EACH	25.00
1940-47 PICKUP, RIGHT HAND	
01C-17526 EACH	25.00
01C-17526-WT (WRIST MOUNT) EACH	25.00
1940-47 PICKUP, LEFT HAND	
01C-17527 EACH	25.00
01C-17527-WT (WRIST MOUNT) EACH	25.00



WIPER CONTROL ON-OFF SWITCH U.S.A. AAA QUALITY

1937 STANDARD WAGON		1940 DELUXE	
LIGHT BROWN KNOB		MAROON KNOB	
78-17535-A EACH	48.50	01A-17535-B EACH	48.50
1937 DELUXE WAGON & CONVERTIBLE		1946 ALL EXCEPT SUPER DELUXE CONVERT, SPORTSMAN & WAGON	
YELLOWISH-BROWN KNOB		BLUE-GRAY KNOB	
78-17535-B EACH	48.50	51A-17535-B EACH	24.50
1938 CONVERTIBLE & WAGON		1946 SUPER DELUXE CONVERT., SPORTSMAN & WAGON	
IVORY KNOB		1947-48 ALL	
81A-17535 EACH	48.50	GRAYISH-TAN KNOB	
1939 CONVERTIBLE & WAGON		51A-17535-C EACH	24.50
LIGHT YELLOW KNOB		1940-41 PICKUP	
91A-17535 EACH	48.50	TAN KNOB	
1940 STANDARD		01C-17535 EACH	48.50
SAND KNOB		1942-47 PICKUP	
01A-17535-A EACH	48.50	BLACK KNOB	
		21C-17535 EACH	48.50



TANDEM WINDSHIELD WIPER ASSEMBLY

SET CONTAINS 2 CHROME PLATED ARMS, 2 BLADES, 1 CHROME PLATED CONNECTING SHAFT AND 1 DUMMY SWIVEL POST.

1932-38	
68-17574 KIT	45.00



WIPER CONTROL ROD LINKS SWITCH TO MOTOR

1937-39 CONVERTIBLE & WAGON	
78-17537 EACH	4.50
1940 PASSENGER	
01A-17537 EACH	4.50
01C-17537 EACH	INQUIRE
1937-40 WIPER ROD RUBBER GROMMET	
78-17577 EACH	1.50



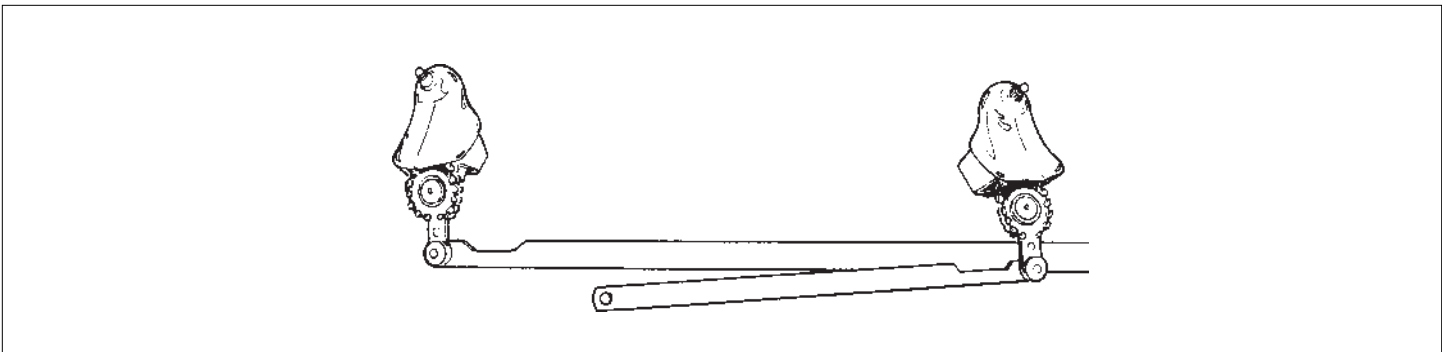
WIPER SHAFT ROOF GROMMETS

1932-34 CLOSED CAR	
40-17541 EACH	3.50
1935-36 CLOSED CAR	
48-17541 EACH	3.50
1937-39, 41-48 CLOSED CAR	
11A-17541 PAIR	3.50



WIPER TOWER PADS

1937-40 CONVERTIBLE & WAGON	
78-17556 PAIR	8.00
1940 COUPE, SEDAN, 41 SEDAN DELIVERY	
01A-17556 PAIR	8.00



**WINDSHIELD WIPER TOWERS
AAA QUALITY**

COMPLETE ASSEMBLIES INCLUDE:
CHROME BASES, PIVOT ARMS WITH
SPECIAL CHAINS, CONNECTING ARMS
AND CLAMP BRACKETS,
MOUNTING HARDWARE INCLUDED.

1937-39 CONVERTIBLE & WAGON
78-17552 SET

150.00

1940 CONVERTIBLE & WAGON
01A-17552-C SET

150.00

1940 COUPE & SEDAN, 41 SEDAN
DELIVERY
01A-17552-D SET

150.00



WIPER ARM TO MOTOR GROMMET

1946-48
51A-17562 EACH

2.00



WIPER HOSE

1932-48, 3/16"
48-18970 PER FOOT

.95



WIPER HOSE GROMMET FOR FIREWALL

1939
91A-17545 EACH
1940 CONVERTIBLE
01A-17545-A EACH
1940 CLOSED CAR, 41-48 ALL
01A-17545-B EACH
1942-47 PICKUP
21C-17545 EACH

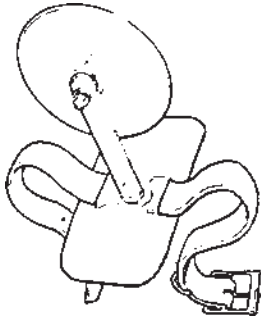
2.50
2.50
2.50
2.50
5.25

**USE OUR TOLL FREE NUMBER
1-800-532-1932
OR OUR FAX NUMBER
408-866-1934
FOR PLACING YOUR ORDER!**

**FOR INFORMATION PLEASE
CALL
408-378-1935**

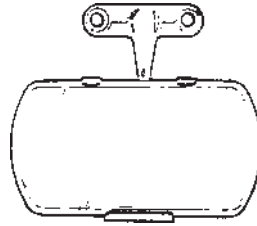
MIRROR

INSIDE MIRRORS



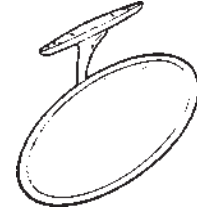
SIDEMOUNT SPARE TIRE MIRROR
INCLUDES LEATHER MOUNTING STRAP

1932-34 WITH SIDEMOUNT SPARE
B-17700-SMLS EACH 49.95



**1932-34 CABRIOLET & CONVERTIBLE
SEDAN**

CHROME
B-17690 EACH 60.00
B-17690-SR EACH 65.00

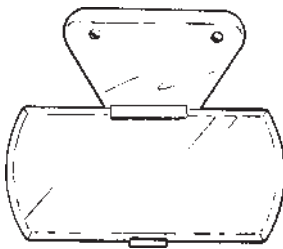


1935 LATE & 36 CLOSED CAR
68-17682-SS EACH 60.00

1937-39 CLOSED CAR
78-17682-SS EACH 60.00

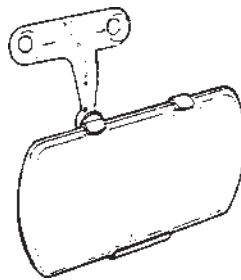
1940 CLOSED CAR
01A-17682-SS EACH 60.00

1941-42 CLOSED CAR
11A-17682-SS EACH 55.00



INSIDE REARVIEW MIRROR

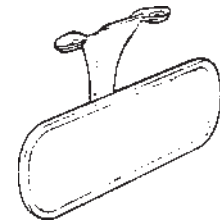
1932 ROADSTER, PHAETON
STAINLESS STEEL
B-17681-SS EACH 60.00
B-17681-SR EACH 60.00



**1935-36 CABRIOLET & CONVERTIBLE
SEDAN**

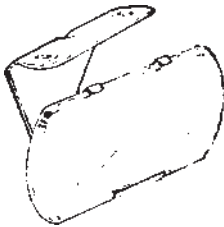
CHROME
48-17690 EACH 60.00
48-17690-SR EACH 65.00

**1932-36 SR MIRRORS HAVE STAINLESS
STEEL OVAL HEADS**

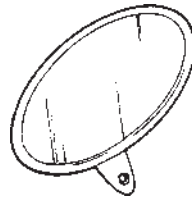


1946-48 CLOSED CAR
PAINTED SILVER
6A-17682 EACH INQUIRE

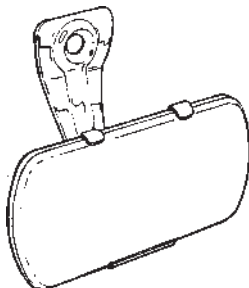
1946-48 CLOSED CAR
STAINLESS STEEL
11A-17682-SS EACH 55.00



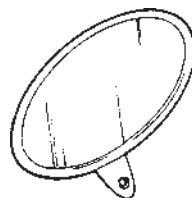
1932-36 CLOSED CAR & PICKUP
PAINTED BROWN
B-17682 EACH INQUIRE
STAINLESS STEEL
B-17682-SS EACH 50.00
B-17682-SR EACH 60.00



1937-39 CONVERTIBLE & WAGON
78-17690-SR EACH 55.00

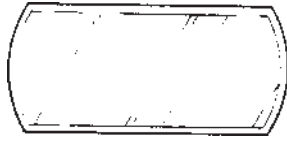


1933-36 ROADSTER & PHAETON
STAINLESS STEEL
40-17681-SS EACH 60.00
40-17681-SR EACH 60.00

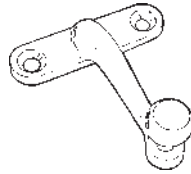


1940-48 CONVERTIBLE & WAGON
01A-17690-SR EACH 60.00

BILLET ALUMINUM STREET
ROD MIRRORS - SEE PG.205



1932-36 MIRROR GLASS
BEVELED EDGES
B-17681-MG EACH 15.00



INSIDE REAR VIEW MIRROR BRACKETS

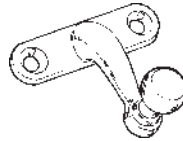
1932-34 CABRIOLET & CONVERTIBLE SEDAN
CHROME PLATED
B-17690-B EACH INQUIRE



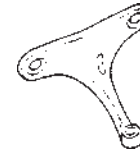
1935 LATE, 1936 CLOSED CAR
PAINTED BROWN
68-17690-P EACH INQUIRE
CHROME
68-17690-C EACH INQUIRE



1932 CLOCK MIRROR
CLOCK INCLUDED
B-18541 EACH INQUIRE



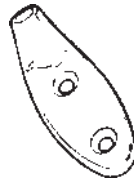
1935-36 CABRIOLET & CONVERTIBLE SEDAN
CHROME PLATED
48-17690-B EACH INQUIRE



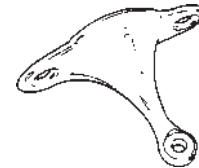
1937-39 CLOSED CAR
PAINTED BROWN
78-7690-P EACH INQUIRE
CHROME
78-17690-C EACH INQUIRE



1935-36 CLOCK MIRROR
SCREENED AS ORIGINAL WITH
RED V-8 & WHITE RING BORDERS
CLOCK NOT INCLUDED.
48-18541 EACH INQUIRE



**1937-39 CONVERTIBLE COUPE,
CONVERTIBLE SEDAN & WAGON**
78-17690-B EACH INQUIRE



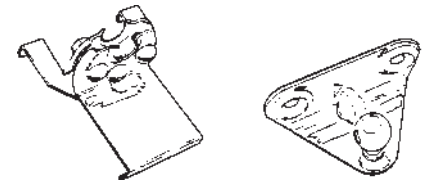
1940 CLOSED CAR
PAINTED BROWN
01A-17690-P EACH INQUIRE
CHROME
01A-17690-C EACH INQUIRE



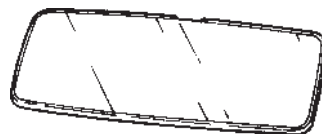
MIRROR HEAD
1935-36 PASSENGER, (FITS SOME)
1937-40 PASSENGER
1935-47 PICKUP
PAINTED
68-17682-H EACH 25.00
STAINLESS STEEL
68-17682-HSS EACH 30.00



1940-48 CONVERTIBLE & WAGON
01A-17690-B EACH INQUIRE



BRACKETS
1932-36 CLOSED CAR
STAINLESS STEEL
B-17690-BS EACH INQUIRE
1932-36 CLOSED CAR
PAINTED BROWN
B-17690-BP EACH INQUIRE
1933-36 ROADSTER & PHAETON
STAINLESS STEEL
40-17690-S EACH INQUIRE

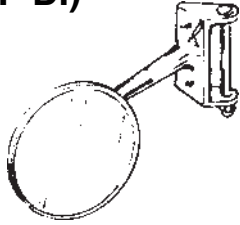


UNIVERSAL INTERIOR MIRROR
FITS 1932-36 MOUNTING BRACKET
B-17681-SG EACH 20.00

CLAMPS
1932-36 STAINLESS STEEL
B-17682-CLS EACH INQUIRE
1932-36 PAINTED BROWN
B-17682-CLP EACH INQUIRE

MIRROR

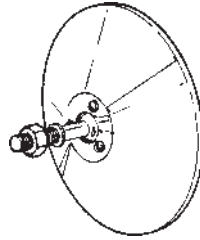
(CONT"D.)



DOOR HINGE MIRROR

EXCELLENT COPY OF ORIGINAL.
INCLUDES DOOR PIN, NUT &
SET SCREWS. FITS R.H. OR L.H.
1932 COUPE & SEDAN (EXCEPT
3 WINDOW COUPE)
B-17741 EACH

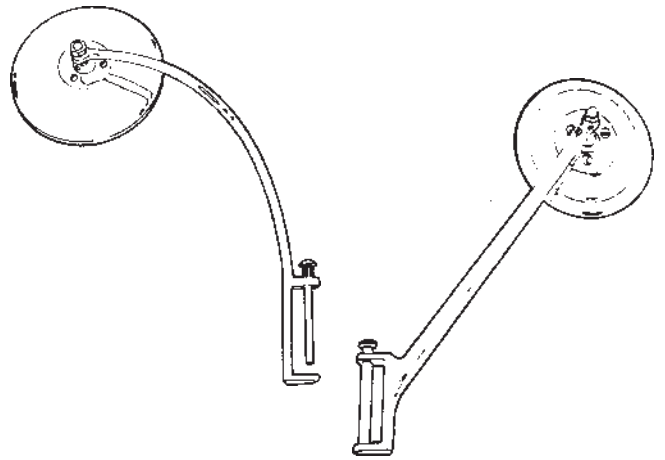
45.00



MIRROR HEAD

1935-40 PASSENGER
1935-47 PICKUP
AAA QUALITY
48-18403-C EACH

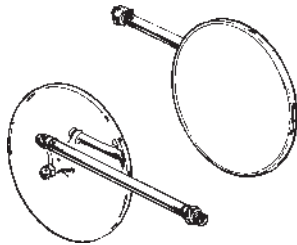
30.00



DOOR HINGE MIRROR

RIGHT HAND OR LEFT HAND
1935-40 PASSENGER
48-18403-E EACH (STRAIGHT)
68-18403 EACH (CURVED)

60.00
60.00

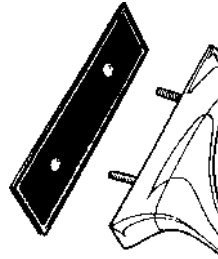


POST MIRROR

1932-33 ROADSTER & PHAETON
18-17700-P EACH
ARM SHORTENED 2"
18-17700-CHP EACH

45.00

45.00



COWL MIRROR PADS

1940-48
01A-18402-RP ('40 R.H.)
01A-18403-RP ('40 L.H.)

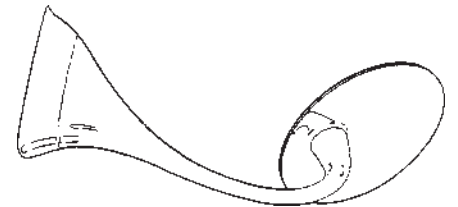
10.00
10.00

11A-18402-RP ('41 R.H.)
11A-18403-RP ('41 L.H.)

10.00
10.00

21A-18402-RP ('42-48 R.H.)
21A-18403-RP ('42-48 L.H.)

10.00
10.00



COWL MIRROR

1940 PASSENGER
RIGHT
01A-18402-R EACH
LEFT
01A-18403-L EACH
01A-18402/3 PAIR

65.00
65.00
135.00

COWL MIRROR

1941 PASSENGER
RIGHT
11A-18402-R EACH
LEFT
11A-18403-L LEFT
11A-18402/3 PAIR

INQUIRE
INQUIRE
INQUIRE

COWL MIRROR

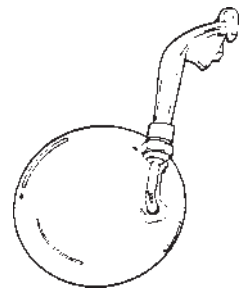
1942-48 PASSENGER
RIGHT
21A-18402-R EACH
LEFT
21A-18403-L EACH
21A-118402/3 PAIR

65.00
65.00
135.00

COWL MIRROR

1940 MERCURY
RIGHT
09A-18402-R EACH
LEFT
09A-18403-R EACH
09A-18402/3 PAIR

INQUIRE
INQUIRE
INQUIRE



PEEP MIRROR - U.S.A.

CLAMPS TO UPPER EDGE OF DOOR
DIE CAST CHROME PLATED ARM &
DIE-STAMPED STAINLESS STEEL
HEAD.

3" UNIVERSAL CURVED ARM
B-18414-3 EACH

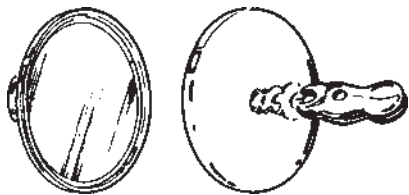
25.00

4" UNIVERSAL CURVED ARM
B-18414-4 EACH

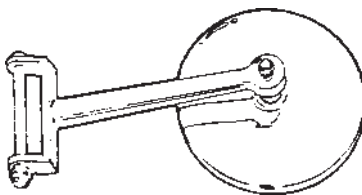
25.00

4" UNIVERSAL STRAIGHT ARM
A-17741-U EACH

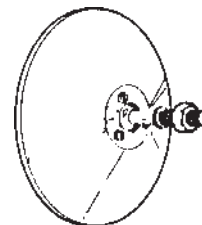
30.00



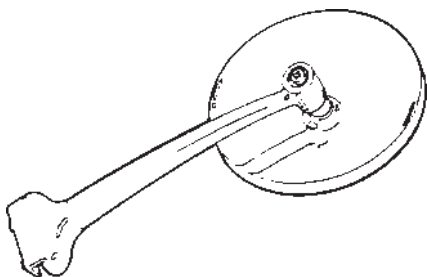
WIND WING MIRROR
RIGHT HAND OR LEFT HAND
B-17700-WWC EACH 32.50



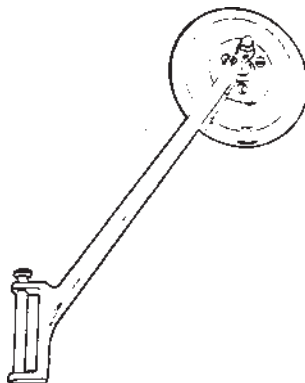
DOOR HINGE MIRROR
1932-34 PICKUP
INCLUDES DOOR PIN & SET SCREWS
46-17741 EACH 50.00



MIRROR HEAD
1935-40 PASSENGER
1935-47 PICKUP
48-18403-C EACH 30.00

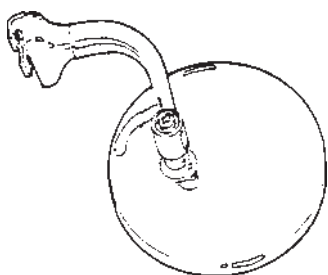


STRAIGHT ARM PEEP MIRROR
CLAMPS ON FRONT EDGE OF DOOR
A-17741-U EACH 30.00

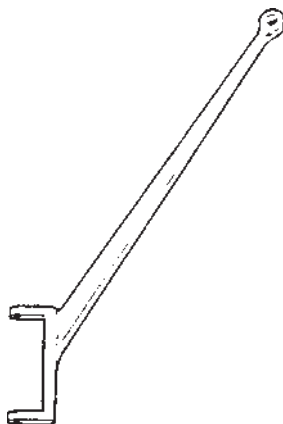


DOOR HINGE MIRROR
CAST IRON ARM
1935-47 PICKUP
FITS RIGHT OR LEFT
BLACK ARM 50-17741-B EACH 60.00
CHROME ARM 50-17741-C EACH 60.00

FOR HINGE PINS SEE PAGE 158

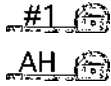


PEEP MIRROR
3" B-18414-3 EACH 25.00
4" B-18414-4 EACH 25.00

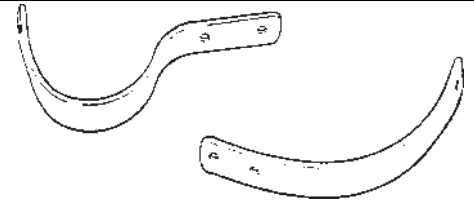


MIRROR ARM
1935-42 PICKUP
FITS RIGHT OR LEFT
BLACK 50-17741-AB EACH INQUIRE
CHROME 50-17741-AC EACH INQUIRE

BUMPER

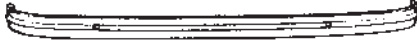


ASK ABOUT STAINLESS STEEL BUMPERS NOW IN STOCK. STAINLESS ADD \$40.00



1932-40 BUMPERS - U.S.A.

EXACT DUPLICATE OF ORIGINAL. AAA SHOW QUALITY.



1932 PASSENGER & COMMERCIAL
FRONT OR REAR, CHROME PLATED
B-17750 EACH 350.00



1933 PASSENGER
FRONT OR REAR, CHROME PLATED
18-17750-A EACH 350.00

1934 PASSENGER
FRONT OR REAR, CHROME PLATED
40-17750-A EACH 350.00

1934 VICTORIA
REAR, CHROME PLATED
40-17750-V EACH INQUIRE



1933 PICKUP
FRONT OR REAR, CHROME PLATED
18-17750-B EACH 350.00

1934 PICKUP
FRONT, CHROME PLATED
46-17750-B EACH 350.00

NOTE: 1933-36 PICKUP BUMPERS CAN REPLACE STOCK PASSENGER BUMPERS FOR THE "STRAIGHT" LOOK (NO REAR SPARE).



1935 PASSENGER
FRONT OR REAR, CHROME PLATED
48-17750-A EACH 350.00



1935 PICKUP
FRONT OR REAR, CHROME PLATED
50-17750-B EACH 350.00

BUMPERS AVAILABLE UNPLATED BARE STEEL



1936 PASSENGER
FRONT OR REAR, CHROME PLATED
68-17750-A EACH 350.00

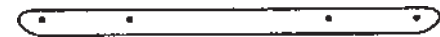


1936 PICKUP
FRONT OR REAR, CHROME PLATED
67-17750-B EACH 350.00



1937 PASSENGER, 1937 COMM F & R
FRONT, CHROME PLATED
78-17750-F EACH 350.00

REAR, CHROME PLATED
78-17750-R EACH 350.00



1938 ALL, 39 STANDARD, 38 PICKUP
FRONT OR REAR, CHROME PLATED
81A-17750 EACH 350.00



1939 DELUXE PASSENGER
FRONT OR REAR, CHROME PLATED
91A-17750 EACH 350.00



1940 PASSENGER, 40-41 PICKUP (FRONT)
FRONT OR REAR, CHROME PLATED
01A-17757 EACH 350.00

1940 FORD SCRIPT
FRONT OR REAR, CHROME PLATED
01A-17757-F EACH 350.00

1940-41 PICKUP
REAR, CHROME PLATED
01C-17757 EACH 350.00



1942-47 PICKUP
FRONT, CHROME PLATED
21C-17757 EACH INQUIRE

BUMPER TO FRAME BRACKETS - U.S.A. FRONT BUMPER ARMS, R. & L.

1932 PASSENGER & COMMERCIAL
B-17754/5-S PAIR 60.00

1933 PASSENGER & COMMERCIAL
40-17766/7-B 4 PC. SET 120.00

1934 PASSENGER & COMMERCIAL
40-17766/7-C 4 PC. SET 120.00

1935 PASSENGER & COMMERCIAL
48-17766/7 4 PC. SET 120.00

1936 PASSENGER & COMMERCIAL
68-17766/7 4 PC. SET 120.00

1937 PASSENGER & COMMERCIAL
78-17766/7 4 PC. SET 120.00

1939 DELUXE
91A-17766/7 4 PC. SET 120.00

1940 STANDARD
01A-17766-AK 4 PC. SET 95.00
1940 DELUXE
01A-17766-BK 4 PC. SET 95.00

REAR BUMPER ARMS, R & L.

1932 PASSENGER
B-17821/2 2 PC. SET 60.00

1933 PASSENGER
40-17787 2 PC. SET 60.00

1934 PASSENGER
40-17787-C 2 PC. SET 60.00

1934 VICTORIA
40-17787-V 2 PC. SET 100.00

1935 PASSENGER
48-17787 2 PC. SET 60.00

1936 PASSENGER
68-17787 2 PC. SET 60.00

1937 PASSENGER
78-17787 4 PC. SET 120.00

1939 PASSENGER
91A-17787-A 4 PC. SET 120.00

1940 PASSENGER
01A-17787 4 PC. SET 120.00

1936 PICKUP
67-17787 4 PC. SET 120.00

1937 PICKUP
77-17787 4 PC. SET 120.00

1938-41 PICKUP
01C-17787-A 4 PC. SET 120.00



REAR BUMPER BRACKETS (SHORTENED)

1932 PASSENGER B-17821/2-S 2 PC. SET	105.00
1933 PASSENGER 40-17821/2-S 2 PC. SET	105.00
1934 PASSENGER 40-17821/2-CS 2 PC. SET	105.00
1935-36 PASSENGER 68-17787-SR 2 PC. SET	105.00

**POLISHED STAINLESS STEEL
BUMPER BRACKETS NOW
AVAILABLE FOR MOST CARS
INQUIRE**

BUMPER BAR BOLTS

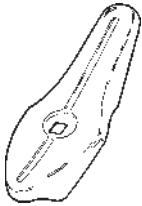
AAA QUALITY, POLISHED STAINLESS HEAD CAPS.



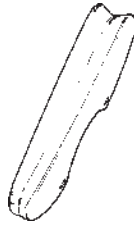
1932 PASSENGER & PICKUP B-17758 EACH	20.00
1932 1 TON & 2 TON TRUCK BB-17758 EACH	INQUIRE

BUMPER GUARDS

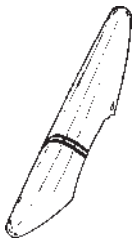
AAA QUALITY, DIE STAMPED AND CHROME PLATED



1933-34 40-17996 EACH	50.00
---------------------------------	-------



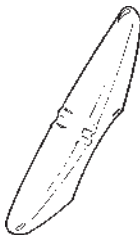
1939 DELUXE 91A-17996 EACH	50.00
--------------------------------------	-------



1935 48-17996 EACH	50.00
------------------------------	-------



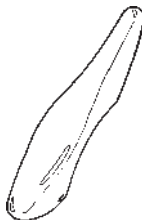
1940 01A-17996 EACH	50.00
-------------------------------	-------



1936 68-17996 EACH	50.00
------------------------------	-------



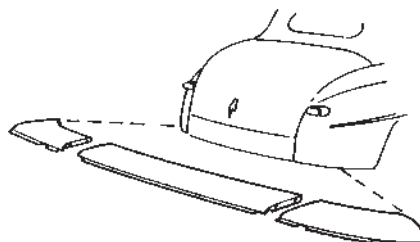
1947- 48 FRONT RIGHT & REAR LEFT 6A-17984-A EACH	INQUIRE
--	---------



1947-48 FRONT LEFT & REAR RIGHT 6A-17985-A EACH	INQUIRE
---	---------

1937 78-17996 EACH	50.00
------------------------------	-------

NOTE: DRIVERS SIDE IS ALWAYS THE LEFT SIDE OF THE CAR IN AMERICA.



REAR GRAVEL DEFLECTOR 1946-48 COUPE, TUDOR, FORDOR & CONVERTIBLE 6A-17808 3 PC. SET	250.00
--	--------

1938 DELUXE, 39 STANDARD 81A-17996 EACH	50.00
---	-------



1933-34 WITH BUMPER GUARDS 40-17908 EACH	15.00
--	-------



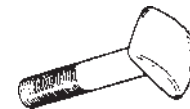
1933-36 PASSENGER & PICKUP REAR OF BUMPER 40-17758-R EACH	15.00
---	-------



1933-40 PASSENGER & PICKUP 40-17758 EACH	15.50
--	-------



1941-48 PASSENGER 1 1/4" 11A-17758 EACH	15.00
---	-------



1941 PASSENGER 2 1/4" 11A-17908 EACH	15.00
1941-42 MERCURY 19A-17908 EACH	15.00

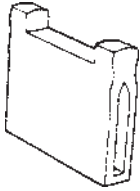


1942-46 ANGLED HEAD 3 3/8" 21A-17908 EACH	15.00
---	-------



1932 BUMPER END PLUG STAINLESS STEEL B-17760 EACH	10.00
--	-------

BUMPER(CONT'D.)



FRONT BUMPER TO PAN ANTI-RATTLER
(FIT OVER BUMPER ARMS)
1942-48
21A-17749-B SET OF 4

20.00



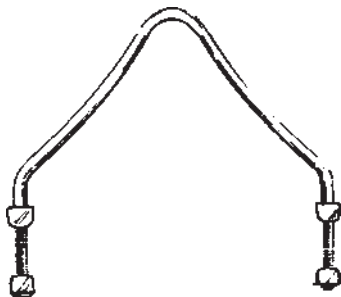
RADIATOR GRILLE PADS
(BOTTOM OF GRILLE)
1946-48
51A-8453 SET OF 4

10.00



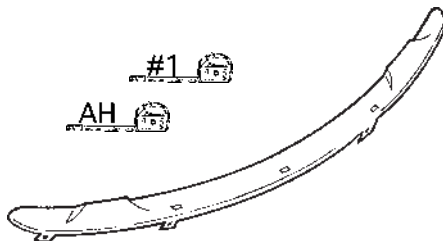
GRILLE BUMPERS
(FIT BETWEEN GRILLE & FENDER)
1946-48
51A-8427-B SET OF 12

INQUIRE



1933-36 BUMPER GRILLE GUARD
40-17799-GG EACH

125.00



1939-40 DELUXE, 1940 GRAVEL DEFLECTOR
FORD APPROVED ACCESSORY. FITS BETWEEN REAR BODY AND BUMPER.

1939-40

01A-17816 EACH

200.00

1939-40 SMOOTH

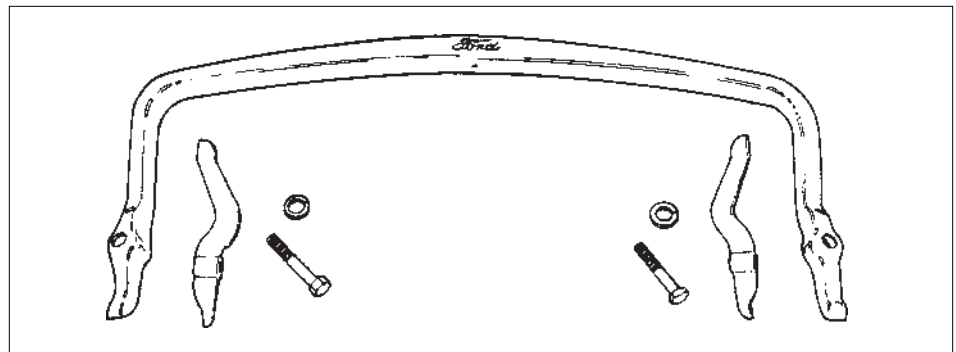
01A-17816-SM EACH

200.00

1941

11A-17816 EACH

200.00



BUMPER GRILLE GUARD

1940 FORD & MERCURY
1940-41 PICKUP
01A-18412 EACH

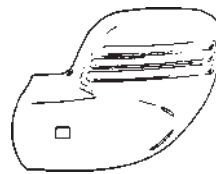
48-17772

68-17772/3

81A-17772/3

11A-17772/3

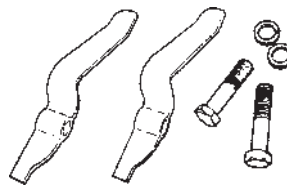
50-17772/3



BUMPER TIPS

1940
01A-18383 SET OF 4

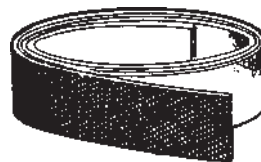
235.00



GRILLE GUARD STIFFENERS

1940 FORD & MERCURY
01A-18412-K KIT

INQUIRE



ANTI-SQUEAK PAD

1932-48, 1" WIDE X 25' LONG
B-17772-C KIT

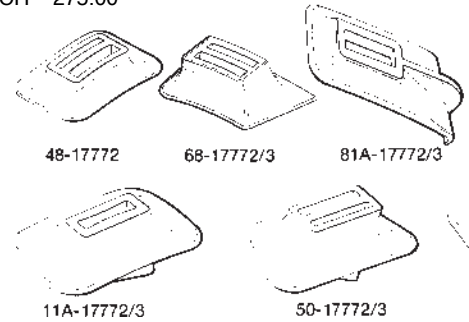
15.00



REAR BUMPER TO BODY SEAL

1942-48 PASSENGER
6A-17832-A EACH

15.00



FRONT BUMPER ARM GROMMETS

1935 PASSENGER

48-17772 PAIR

20.00

1935-37 PICKUP

50-17772/3 PAIR

20.00

1936-37 PASSENGER, 38 STD.

68-17772/3 PAIR

20.00

1938 DELUXE, 39 STANDARD

81A-17772/3 PAIR

20.00

1938-39 PICKUP

81C-17772/3 PAIR

20.00

1939-40 PASSENGER, 40-41 PICKUP

91A-17772/3-S PAIR

20.00

1941 PASSENGER

11A-17772/3 PAIR

20.00

REAR BUMPER ARM GROMMETS

1934 VICTORIA

40-17792/3 PAIR

30.00

1933-36 REAR

48-17792 PAIR

20.00

1937 ALL, 38-40 COUPE & CONVERT.

78-17792/3 PAIR

20.00

1938-40 SEDAN, TUDOR, FORDOR

81A-17792/3 PAIR

20.00

1940-41 SEDAN DELIVERY

01A-17792 PAIR

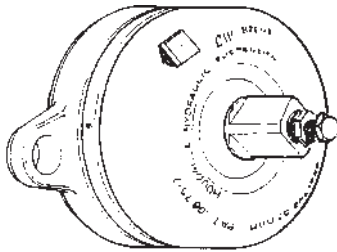
30.00

1941 PASSENGER

11A-17792/3 PAIR

20.00

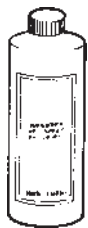
SHOCK ABSORBERS



SHOCK ABSORBERS - U.S.A. FORD SCRIPT

- 1932, RIGHT FRONT & LEFT REAR
B-18015-B EACH INQUIRE
- 1932, LEFT FRONT & RIGHT REAR
B-18016-B EACH INQUIRE
- 1933, RIGHT FRONT & LEFT REAR
40-18015-B EACH INQUIRE
- 1933, LEFT FRONT & RIGHT REAR
40-18016-B EACH INQUIRE
- 1934, RIGHT FRONT ONLY
44-18015-B EACH INQUIRE
- 1934, LEFT FRONT ONLY
44-18016-B EACH INQUIRE
- 1935-36, RIGHT FRONT
48-18015-A EACH INQUIRE
- 1935-36, RIGHT REAR
48-18015-B EACH INQUIRE
- 1935-36, LEFT FRONT
48-18016-A EACH INQUIRE
- 1935-36, LEFT REAR
48-18016-B EACH INQUIRE

32-48 N.O.S. & USED SHOCKS AVAILABLE INQUIRE



SHOCK ABSORBER FLUID

- 1932-48
M-1046 PINT 7.50



SHOCK ABSORBER MOUNTING KIT

- 1932-48
A-18015-MB KIT (4 SHOCKS) 6.00



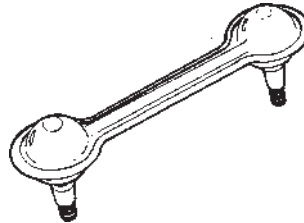
REAR SHOCK ABSORBER ARM

- 1935-36 PASSENGER & COMMERCIAL
48-18052 EACH 65.00



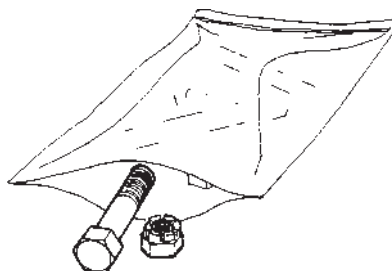
SHOCK ABSORBER LINK ASSEMBLY

- 1932-34, HOLES ON OPPOSITE SIDES
B-18055-CS EACH 7.95
- 1934-35, HOLES ON SAME SIDE
40-18055 EACH 7.00



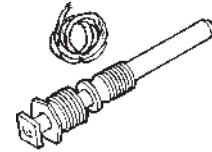
SHOCK ABSORBER LINK ASSEMBLY

- 1935-40, 3" BETWEEN STUDS
48-18055 EACH 25.00
- 1937-48, 4" BETWEEN STUDS
78-18055 EACH 20.00
- 1940-47 COMMERCIAL, FRONT
01Y-18055 EACH 25.00
- 1941-48, 4.7" BETWEEN STUDS
99A-18055 EACH 25.00
- 1946-48, 2.39" BETWEEN STUDS
21A-18055 EACH 25.00
- N.O.S. AVAILABLE**



SHOCK ABSORBER ARM BOLT KIT

- 1932-36 PASSENGER & COMMERCIAL
A-18047/52 KIT 9.50



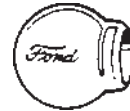
SHOCK ABSORBER NEEDLE VALVE ASSEMBLY

- 1932
B-18037-AS SET OF 4 INQUIRE



SHOCK ABSORBER BUSHING

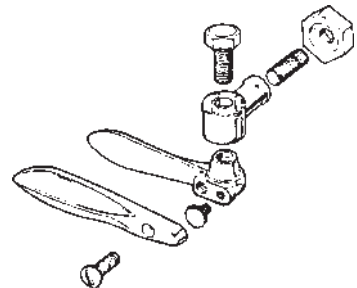
- FOR TUBULAR SHOCKS (16 REQD.) AND TRACK BAR (8 REQ'D.)
1947-48 PASSENGER
51A-18197 EACH 2.00



SHOCK ABSORBER LINK BUSHING

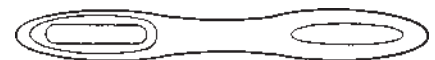
- 8 REQUIRED
1932-35
B-18060 PAIR 6.00

WINDWING



WINDWING BRACKET SETS

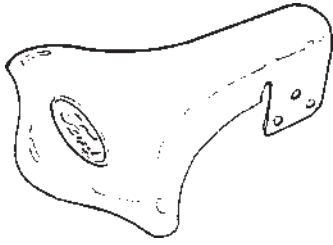
- 1932-35 ROADSTER & PHAETON
A-18200-B SET 99.95
- 1932 CLOSED CAR
A-18200-C SET 82.75
- 1936 ROADSTER & PHAETON
68-18200 SET 130.00



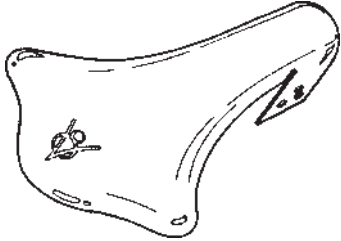
WINDWING BRACKET RUBBER PAD

- 1932-35 ROADSTER & PHAETON
B-7603108 SET OF 4 10.50

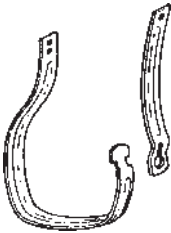
ACCESSORIES



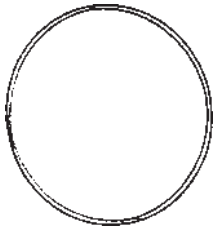
FORD SCRIPT EXHAUST DEFLECTOR
 POLISHED STAINLESS
 1932-48 ALL
 51A-18259-A EACH 20.00



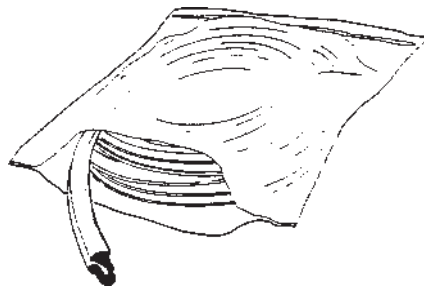
EXHAUST DEFLECTOR WITH EMBOSSED V-8 EMBLEM
 POLISHED STAINLESS
 1932-48 ALL
 51A-18259-B EACH 20.00



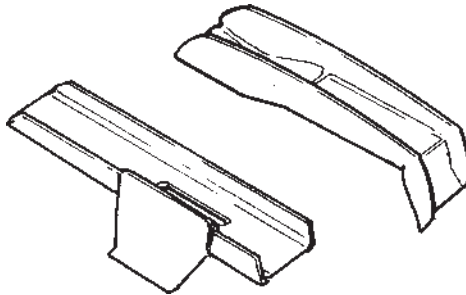
SPARE WHEEL LOWER LOCK BAND
 1933-35 PASSENGER
 48-18304-B EACH INQUIRE
 SHORT BAND
 48-18304-A EACH INQUIRE



1933-36 TIRE COVER TRIM
 STAINLESS STEEL WITH CLIP & MOUNTING HARDWARE
 1933-34
 40-18304 EACH 110.00
 1935-36
 48-18304 EACH 110.00
 FOR SEAL SEE PAGE 10



FENDER SKIRT SEAL
 1940-48
 01A-18990 PAIR 10.50



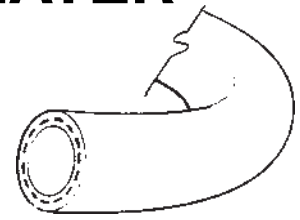
SPARE TIRE HOLD-DOWN BRACKET
 1937-38 TUDOR, FORDOR, CLUB COUPE, CLUB CABRIOLET, PHAETON, CONV. SEDAN
 78-1492 EACH 60.00
 1942-48 CONVERTIBLE
 21A-1492 EACH 60.00

ORIGINAL LOCKING HUBCAPS - 1932-36 AVAILABLE - INQUIRE

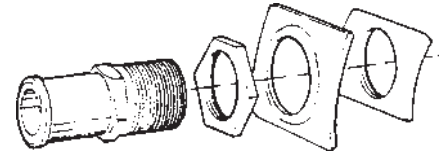


LOCKING HUBCAP PINS
 1932-35
 B-18301 EACH INQUIRE

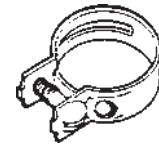
HEATER



HOT WATER HEATER HOSE - U.S.A.
 1939-48, BLACK
 91A-15167 PER FOOT 1.00



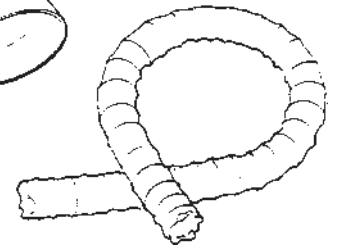
HOT WATER HEATER HOSE CONNECTOR
 1939-48
 91A-15160-A EACH 12.50



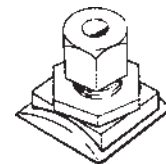
HOT WATER HEATER HOSE CLAMPS
 1939-48
 91A-18572-A 4 1/4 EACH 1.00



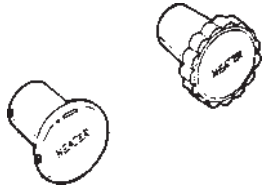
HEATER DEFROSTER NOZZLES WITH HOSE
 1940
 01A-18491 KIT 50.00



HEATER DEFROSTER HOSE
 1939-48
 91A-18554 PER FOOT 6.00

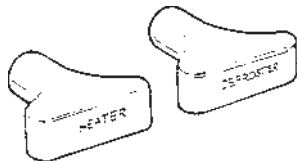


TEMPERATURE GAUGE HOSE FITTING
 1932-34 ORIGINAL ONLY
 B-18425-A EACH INQUIRE



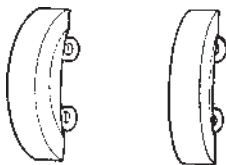
HOT WATER HEATER KNOBS

1935 STANDARD, MAROON 48-18500-A EACH	7.50
1935 DELUXE, IVORY 48-18500-B EACH	7.50
1936 STANDARD, DARK BROWN 68-18500-A EACH	7.50
1936 EARLY DELUXE, LIGHT GRAY 68-18500-B EACH	7.50
1936 LATE STANDARD & DELUXE RED-BROWN 68-18500-C EACH	7.50
1937 STANDARD, LIGHT BROWN 78-18500-A EACH	7.50
1937 DELUXE, YELLOISH-BROWN 78-18500-B EACH	7.50
1938 DELUXE & STD., IVORY 81A-18500 EACH	7.50
1939 DELUXE & STD., LIGHT YELLOW 91A-18500 EACH	7.50



HOT AIR HEATER & DEFROSTER KNOBS

1939, LIGHT YELLOW 91A-18502/3 PAIR	INQUIRE
1940-46, LIGHT GREEN 01A-18502/3 PAIR	16.00



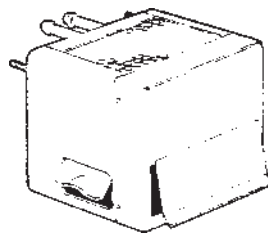
HOT WATER HEATER DOOR KNOBS

1939, LIGHT YELLOW 91A-18560 SET OF 2	11.00
1939, WHITE 91A-18560-W SET OF 2	11.00
1940, LIGHT GREEN 01A-18560 SET OF 2	11.00
1941-48, BLACK 11A-18560 SET OF 3	16.00
1941-48 TAN 11A-18560-T SET OF 3	16.00



HOT WATER HEATER DEFROSTER PULL KNOBS

1937 STD LIGHT BROWN 78-18501-A EACH	7.50
1937 DLX DARK BROWN 78-18501-B EACH	7.50
1938 IVORY PINK 81A-18501 EACH	7.50
1939-40, LIGHT GREEN 91A-18562 EACH	7.50
1939 WHITE 91A-18562-W EACH	7.50
1939 YELLOW 91A-18562-Y EACH	7.50
1941, TAN 11A-18562 EACH	7.50
1942, MAROON 21A-18562-A EACH	7.50
1942, BUTTERSCOTCH 21A-18562-B EACH	7.50
1946, CHOCOLATE 51A-18562-A EACH	7.50
1946, BLUE-GRAY 51A-18562-B EACH	7.50
1946, GRAY-TAN 51A-18562-C EACH	7.50
1947-48 GRAY-TAN 6A-18562-C EACH	7.50



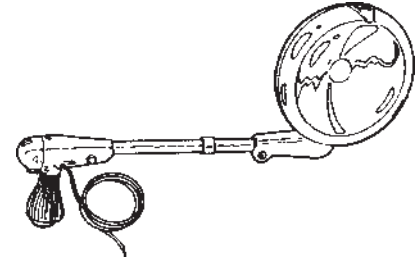
NEW HOT WATER HEATER

7" HIGH, 6.75" WIDE, 6.75" DEEP
VINTAGE LOOK WITH DASH MOUNTED
CONTROLS, SHUT-OFF VALVE, CLAMPS
AND MOUNTING TEMPLATE.

SPECIFICATIONS: 12,500 BTU PER HR.
130 CFM HEAVY DUTY
MOTOR, HEAVY DUTY
CORE, ALL METAL.

SIX VOLT B-18450-6V EACH	235.00
12 VOLT B-18450-12V EACH	235.00

SPOTLIGHT



FORD SCRIPT SPOTLIGHT

1947-48, RIGHT, 6 VOLT 6A-18552 EACH	INQUIRE
1947-48, LEFT, 6 VOLT 6A-18553 EACH	INQUIRE
RIGHT, 12 VOLT, FOMOCO B6A-18552 EACH	INQUIRE
LEFT, 12 VOLT, FOMOCO B6A-18553 EACH	INQUIRE

**USE OUR 800 NUMBER OR
FAX NUMBER FOR
PLACING YOUR ORDER!**

LUGGAGE RACK

1932-36 LUGGAGE RACKS

QUALITY COPIES OF ORIGINALS. DIE STAMPED. STAINLESS STEEL TRIM AND MOUNTING BRACKETS INCLUDED. COMES READY TO PAINT.

NOTE: FOR '34 WITHOUT SPARE, ASK FOR '33 BRACKETS.



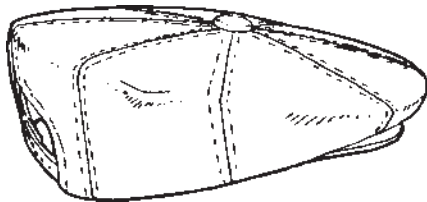
1932		
B-18575 EACH		650.00
1933		
18-18575 EACH		650.00
1934		
40-18575 EACH		650.00
1935-36		
48-18575 EACH		650.00



LUGGAGE RACK EMBLEM

1933-36
DIE CAST & CHROME PLATED.
MOUNTING HARDWARE INCLUDED

46-16608 EACH		25.00
---------------	--	-------



STROKER HATS

PLAIN		
159760 EACH		17.50
FORD PATCH		
159761 EACH		17.50
FORD V-8 PATCH		
159764 EACH		17.50

IDENTIFICATION PLATES



PATENT DATA PLATE - U.S.A.

1932-34		
B-14001 EACH		6.00
1935-36		
48-14001 EACH		6.00
1937-39		
78-14001 EACH		6.00
1940-48		
01A-14001 EACH		6.00
1939-40 MERCURY		
99A-14001 EACH		6.00



V-8 BODY NUMBER PLATES - U.S.A.

1933-34		
40-14002 EACH		5.00
1935		
48-14002 EACH		5.00
1936		
68-14002 EACH		5.00
1937		
78-14002 EACH		5.00

DATA PLATE MOUNTING SCREWS STAINLESS STEEL

1932-48		
A-18650-MB SET		3.00



"GENUINE FORD PARTS" DECAL		
3"		
B-18655-A EACH		3.50



3" EMBROIDERED "FORD" SCRIPT TIRE COVER EMBLEMS

A-18657 EACH		INQUIRE
--------------	--	---------



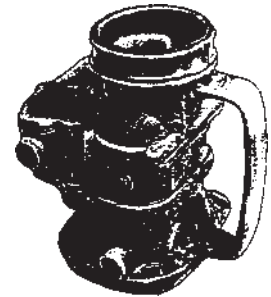
FORD PARTS TAGS

EXACT DUPLICATE OF ORIGINAL RED & CREAM TAG WITH WIRE LEADS.
B-18657-TG PER 100 20.00



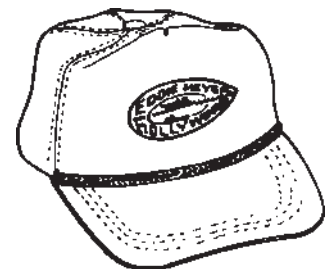
FORD PARTS & SERVICE SIGN

BLUE & WHITE, DOUBLE FACED, BAKED ENAMEL, .032 GAUGE 12" X 18" METAL SIGN.
S-18659 EACH INQUIRE



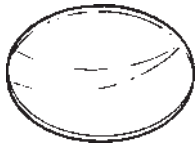
CARBURETOR COFFEE CUP

FASHIONED AFTER THE STROMBERG 97
VT-97 EACH 20.00



EDDIE MEYER HOLLYWOOD LOGO HAT
EMBROIDERY ON BASEBALL-TYPE HAT. VARIOUS COLOR HATS AVAILABLE. RED & BLUE LOGO SHOWS BEST ON WHITE HAT.
159765 EACH INQUIRE

RADIO

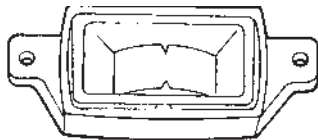


RADIO DIAL FACE GLASS - U.S.A.
CRYSTAL CLEAR CONVEX GLASS WITH THE PROPER THICKNESS

1933-34 ASH TRAY STYLE
40-18801 EACH INQUIRE

1935-36
48-18801 EACH INQUIRE

1937
78-18801 EACH 6.00



RADIO DIAL BEZEL
1938 IVORY COLOR
81A-18802 EACH 27.50



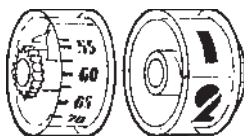
1940 STATION CHANGER BUTTON
PHILCO
01A-18804-P EACH 11.00

ZENITH
01A-18804-Z EACH 11.00



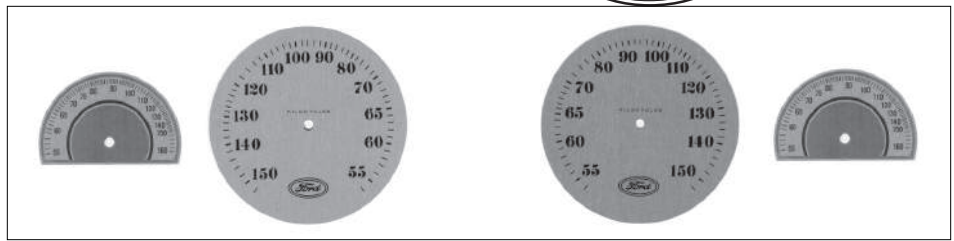
1941 STATION SELECTOR KNOB
PHILCO
11A-18804-P EACH 6.50

ZENITH
11A-18804-Z EACH 6.50



1940 RADIO DIALS
PHILCO
01A-18805-P PAIR 27.50

ZENITH
01A-18805-Z PAIR 27.50



RADIO DIAL FACES
SILK SCREENED FACE ON STAMPED ALUMINUM

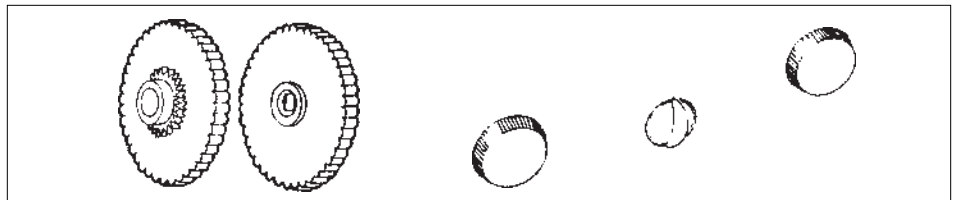
1933-34 ASH TRAY RADIO
40-18802 EACH 15.00

1933-34 GLOVE BOX RADIO, GRISBY
40-18802-G EACH 15.00

1933-34 GLOVE BOX RADIO, ZENITH
40-18802-Z EACH 15.00

1935 AND LATE 36, GRAY BACKGROUND
48-18802 EACH 12.00

1936 BROWN BACKGROUND
68-18802 EACH 12.00



RADIO KNOBS
HIGH QUALITY PLASTIC, EXACT IN EVERY DETAIL.

1933-34 ASH TRAY RADIO KNOBS
40-18803 PAIR 21.00

1933-34 GLOVE BOX KNOBS, GRISBY
40-18803-G PAIR 21.00

1933-34 GLOVE BOX KNOBS, ZENITH
40-18803-Z PAIR 21.00

1935 STANDARD
48-18803-A PAIR 11.00

1935 DELUXE
48-18803-B PAIR 11.00

1936 STANDARD
68-18803-A PAIR 11.00

1936 DELUXE
68-18803-B PAIR 11.00

1936 LATE STANDARD & DELUXE
68-18803-C PAIR 11.00

1937 STANDARD
78-18803-A PAIR 11.00

1937 DELUXE
78-18803-B PAIR 11.00

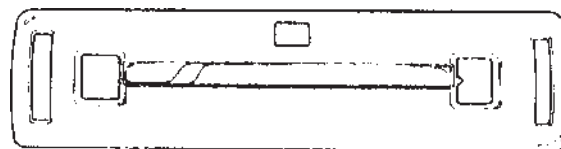
1938 STANDARD & DELUXE
81A-18803 PAIR 11.00

1940 PHILCO
01A-18803-P PAIR 26.50

1940 ZENITH
01A-18803-Z PAIR 26.50

1941 ALL
11A-18803 PAIR 16.00

1946-48 ALL
51A-18803 KNOB, DIAL, INSERT 50.00



1940 RADIO HOLE COVER
STAINLESS STEEL
01A-9272-SSC EACH 17.50

1940 CHROME RADIO COVER
01A-9272-RC EACH 20.00

1940 RADIO COVER, PLASTIC
PHILCO
01A-18802-P EACH 25.00

1940 RADIO COVER, PLASTIC
ZENITH
01A-18802-Z EACH 25.00

1941 RADIO COVER, PLASTIC
PHILCO
11A-18802-P EACH 52.50

ZENITH
11A-18802-Z EACH 52.50

RADIO (CONT'D.)



ASH TRAY RADIO SPEAKER CLOTH

1933-36
40-18806 EACH 16.00



RADIO MOUNTING HOOKS

1940-41
01A-18807 PAIR 8.00

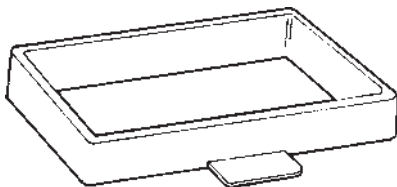
1942-48
21A-18807 PAIR 8.00



1940-41 RADIO MOUNTING NUT

CONNECTS RADIO & ANTENNA THRU DASH.

01A-18808 EACH 10.50



RADIO SPEAKER BOOTS - U.S.A.

HIGH QUALITY MOLDED SPONGE RUBBER INSULATES SPEAKER HOUSING FROM CHROME SPEAKER GRILLE PREVENTING VIBRATION.

1939
91A-18820 EACH 40.00

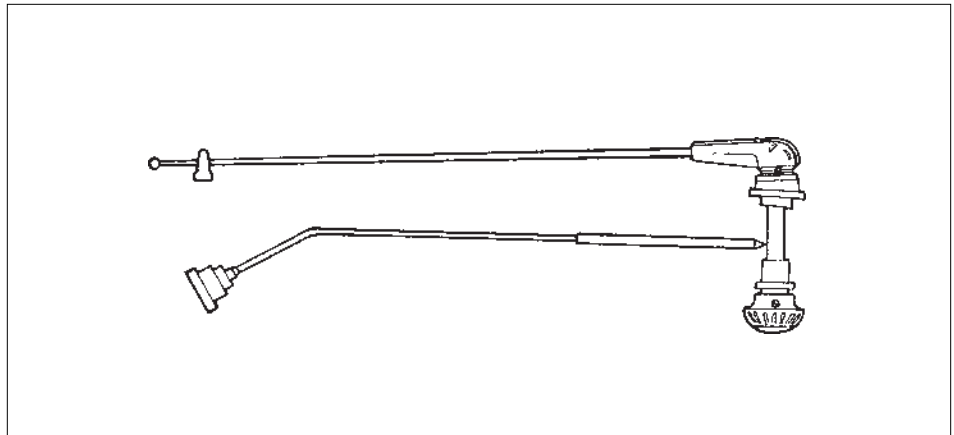
1940
01A-18820 EACH 40.00



RADIO MOUNTING WASHERS

1937-39
78-18869 PAIR INQUIRE

ANTENNA KITS



THESE ANTENNA ARE EXACT REPLICAS OF THE ORIGINALS. THEY ARE COMPLETE AND READY TO INSTALL. THESE KITS COME WITH DETAILED INSTALLATION INSTRUCTIONS AND A MOUNTING TEMPLATE. THIS IS A AA QUALITY REPRODUCTION.

1932-36 SPARE TIRE STYLE 40-18813 EACH	INQUIRE	1940 OPEN CAR & WAGON 01A-18813-A EACH	105.00
1935-36 RUNNING BOARD STYLE 48-18813 EACH	INQUIRE	1941 CLOSED CAR 11A-18813 EACH	85.00
1937 STANDARD CLOSED CAR 78-18813-S EACH	105.00	1941 OPEN CAR & WAGON 11A-18813-A EACH	105.00
1937 CLOSED CAR DELUXE 78-18813-D EACH	105.00	1942-48 CLOSED CAR, CENTER ROOF MOUNT 21A-18813 EACH	85.00
1937 OPEN CAR & WAGON 78-18813-A EACH	105.00	1942-48 OPEN CAR, CENTER ROOF MOUNT 21A-18813-A EACH	100.00
1938 CLOSED CAR 81A-18813 EACH	105.00	1947-48 COWL MOUNT ALL BODY STYLES 6A-18813 EACH	70.00
1938 OPEN CAR & WAGON 81A-18813-A EACH	105.00	1939 MERCURY CLOSED CAR 99A-18813 EACH	113.75
1939 CLOSED CAR 91A-18813 EACH	105.00	1939 MERCURY OPEN CAR 99A-18813-A EACH	113.75
1939 OPEN CAR & WAGON 91A-18813-A EACH	105.00	1940 MERCURY CLOSED CAR 09A-18813-B EACH	85.00
1940 STANDARD CLOSED CAR 01A-18813-S EACH	85.00	1940 MERCURY OPEN CAR 09A-18813-A EACH	113.75
1940 DELUXE CLOSED CAR 01A-18813-D EACH	85.00		



RADIO INSTALLATION BOOKS

REPLICAS OF ORIGINAL FORD PUBLICATIONS.

1933-34 ASH TRAY RADIO - RB-33	12.00	1939 - RB-39	12.00
1935, EARLY 36 - RB-35	12.00	1940 - RB-40	12.00
1936, LATE - RB-36	12.00	1942 - RB-42	12.00
1937 - RB-37	12.00	1946 - RB-46	12.00
1938 - RB-38	12.00	1947-48 - RB-47	12.00

ANTENNA COMPONENTS

THESE PARTS ARE INCLUDED IN THE COMPLETE ANTENNA KITS. WE OFFER THEM SEPARATE FOR THOSE WHO DO NOT NEED THE COMPLETE UNIT.



ANTENNA STOPS

MOUNTS OUTSIDE ON CENTER WINDSHIELD DIVIDER.

1937-39 CLOSED CAR
78-18820 EACH 11.00

1937-40 OPEN CAR, WITH SCREW
78-18821 EACH 11.00

1940 CONVERTIBLE, WITHOUT SCREW
01A-18821 EACH 11.00



ANTENNA TURN KNOBS

1937 STANDARD, LIGHT BROWN
78-18815-A EACH 11.00

1937 DELUXE, YELLOWISH BROWN
78-18815-B EACH 11.00

1938 DELUXE & STD., IVORY
81A-18815 EACH 11.00

1939 DELUXE & STD., LIGHT YELLOW
91A-18815 EACH 11.00

1940 CONVERTIBLE, MAROON
01A-18815-B EACH 11.00

1941 CONVERTIBLE, TAN
11A-18815 EACH 11.00

ANTENNA SLIDE NUT

FOR ADJUSTING ANTENNA HEIGHT. CLOSED CARS ONLY.

1940 STANDARD, SAND
01A-18816-A EACH 8.00

1940 DELUXE, MAROON
01A-18816-B EACH 8.00

1941 DELUXE & STD., TAN
11A-18816 EACH 8.00

1942-48, CLEAR
21A-18816 EACH 8.00

1940 MERCURY, DARK BLUE
09A-18816 EACH 8.00



ANTENNA HOLD DOWN NUT

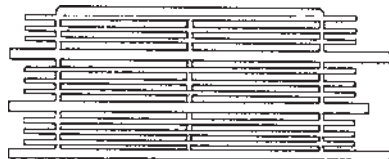
FASTENS ANTENNA TO RADIO BY WAY OF PART # 01A-18808, PG. 126.

1940 STANDARD CLOSED CAR, SAND
01A-18818-A EACH 6.00

1940 DELUXE CLOSED CAR, MAROON
01A-18818-B EACH 6.00

1941 CLOSED CAR, TAN
11A-18818 EACH 6.00

1940 MERCURY, CLOSED CAR
DARK BLUE
01A-18818 EACH 6.00



RADIO SPEAKER GRILLE

AAA QUALITY, CHROME PLATED
1940 PASSENGER
01A-7004352 EACH 75.00

ANTENNA HOLE PLUG

USED WHEN NO ANTENNA IS USED

1940 STANDARD, SAND
01A-7004395-A EACH 6.00

1940 DELUXE, MAROON
01A-7004395-B EACH 6.00

1941, TAN
11A-7004395 EACH 6.00

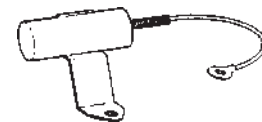
1942, MAROON
21A-7004395-A EACH 6.00

1942, BUTTERSCOTCH
21A-7004395-B EACH 6.00

1946, CHOCOLATE
51A-7004395-A EACH 6.00

1946, BLUE-GRAY
51A-7004395-B EACH 6.00

1947-48, GRAY-TAN
51A-7004395-C EACH 6.00



RADIO SUPPRESSION CONDENSER

1935-39 NOS
48-18823 EACH INQUIRE

1940-46 NOS
01A-18801 EACH INQUIRE

GENERATOR RADIO CONDENSER

1941-48
11A-18824-A EACH INQUIRE

GAS GAUGE RADIO CONDENSER

1941-48
11A-18825-A EACH 15.00

USE OUR 800 NUMBER OR FAX NUMBER FOR PLACING YOUR ORDER!

CALL: 1-800-532-1932

COMING SOON !!!- TRY OUR
WEBSITE AT: allfordparts.com
E-mail: allford@jps.net



ALL FORD PARTS

1600 DELL AVENUE, SUITE A, CAMPBELL, CALIFORNIA 95008

408-378-1935 • 1-800-532-1932 • FAX: 408-866-1934